

## **WebbLok™ Shades**

Durable, cordless window shades

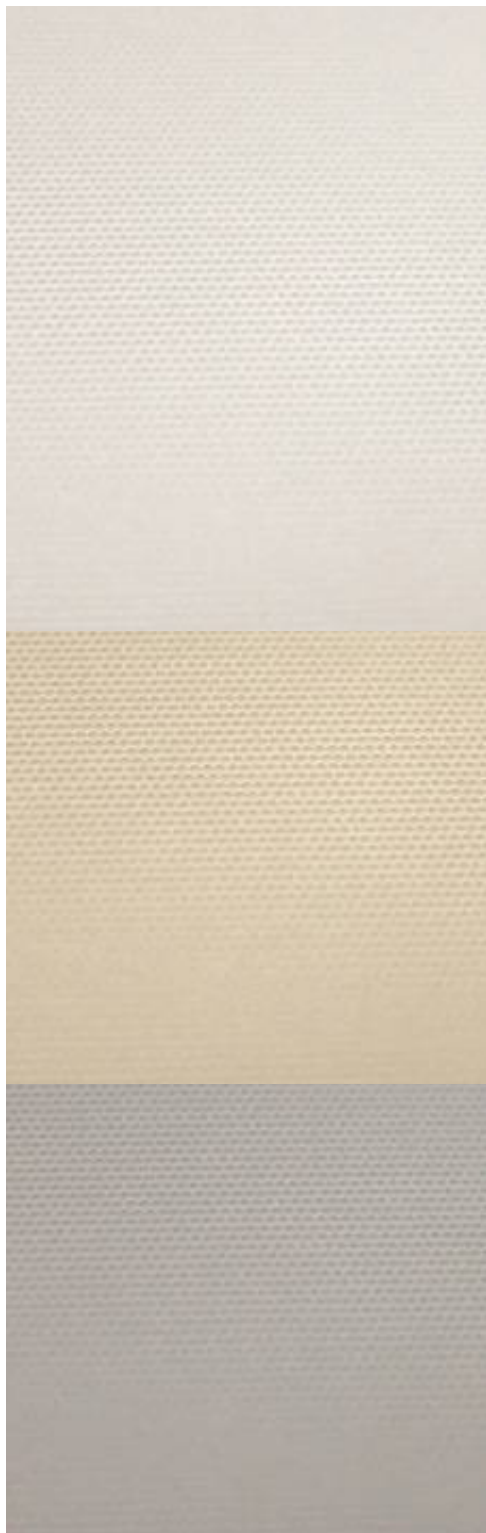


Architectural Products

**inpro®**



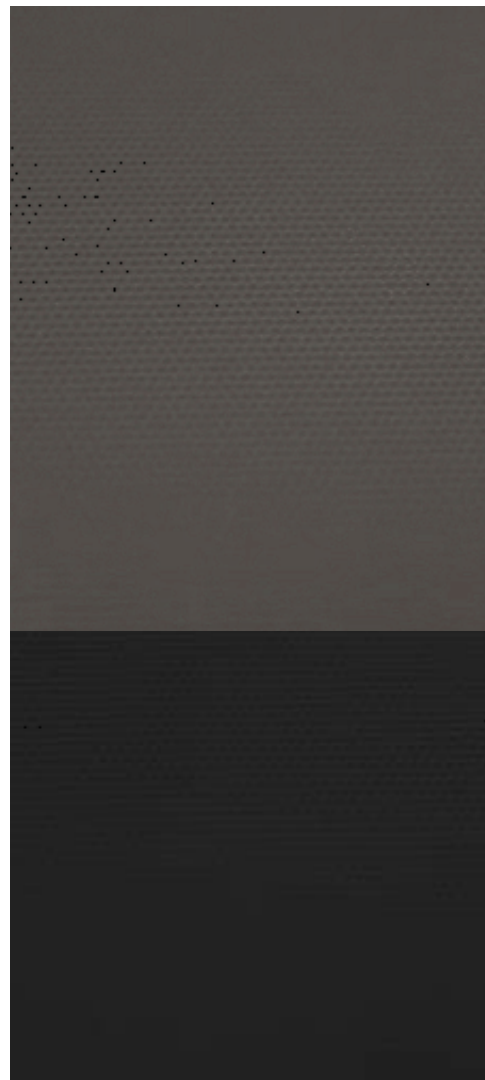
**WT Shade®**  
**Commercial Window Treatments**  
770GC | 0% Openness



-10 White

-05 Sand

-84 Light Grey



-82 Dark Grey

-90 Black

# WT Shade® Commercial Window Treatments

## 770GC | 0% Openness

Have the best of all worlds with WT 770GC blackout fabric. All colors feature a dark grey coating on the backside for a custom look inside, with uniform glare control from the outside.

Specifications and Certifications	
Width:	118"
Composition:	100% Polyester with Grey Acrylic Coating
Openness Factor:	0%
UV Blockage:	100%
Weight (OZ/YD²):	11.8
Thickness (IN):	0.018
Fire Classification:	CALIFORNIA U.S. TITLE 19 (SMALL SCALE); NFPA 701:2019 (TEST METHOD 1)
Air Quality Certification:	GREENGUARD and GREENGUARD GOLD



Fabrics may vary slightly from colors of shown samples. Variances in fabric color are a normal part of fabric production as color mixtures may be slightly different from dye lot to dye lot.

For documentation of test results and certificates please visit [inpro.com/wtshade](http://inpro.com/wtshade).

For 8 x 10 memo samples of any of the fabrics featured on this card, please contact your WT Shade representative or visit [inpro.com/wtshade](http://inpro.com/wtshade).

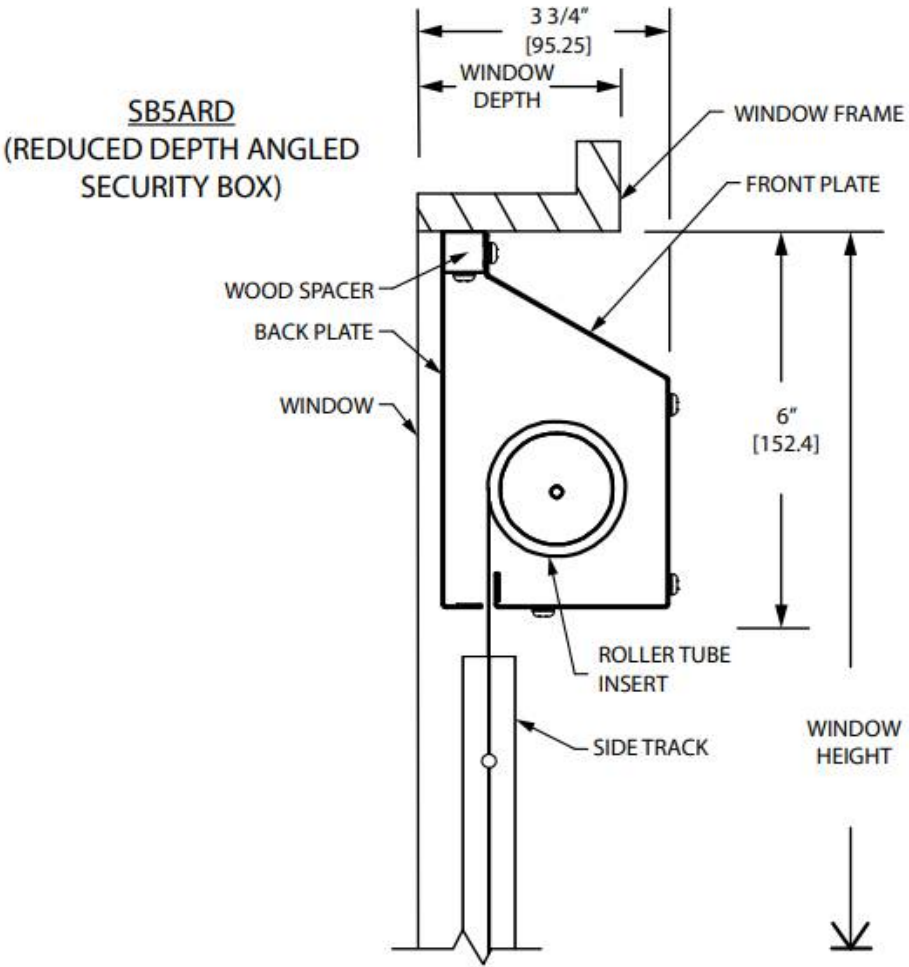
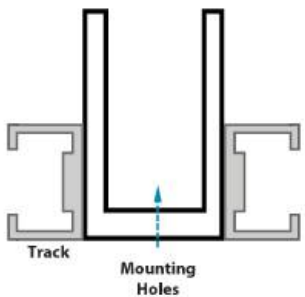
**CLEANING INSTRUCTIONS:** Regular dusting and vacuuming recommended. Do not bleach. Professional cleaning recommended.

© Inpro Corporation

S80 W18766 Apollo Drive  
Muskego, Wisconsin 53150 USA  
[inpro.com/wtshade](http://inpro.com/wtshade)  
877.294.3580

2. The “H” Mullion

- Dimensions: 1” x 1½” x 1/8” “U” Channel (custom sizes available per project req.)
- Specs:
  - o There are 3 mounting holes on the 1” face which allows for direct mounting onto an existing window mullion.
  - o Track is placed on either side and pre-mounted on the mullion.
  - o Pre-drilled holes are located at the top of the mullion for mounting bracket plates.



SB5ARD  
(REDUCED DEPTH  
ANGLED SECURITY BOX)



CWB-0017  
SLOTTED DRIVE  
BRACKET



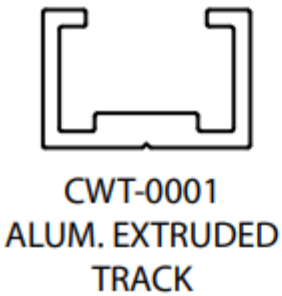
CWB-0016  
HOLED IDLER  
BRACKET



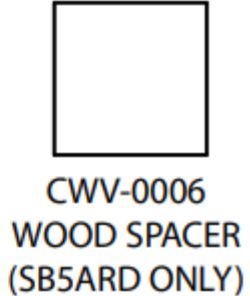
CWSB-0010  
SECURITY BACK  
PLATE



CWSB-0004  
SECURITY BOX COVER



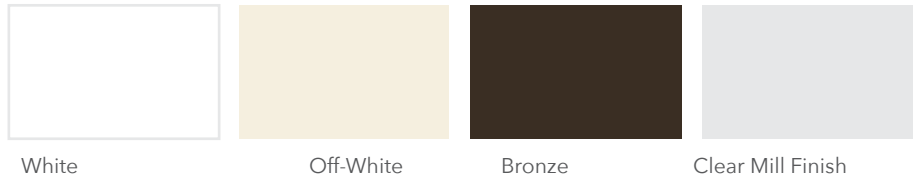
CWT-0001  
ALUM. EXTRUDED  
TRACK



CWV-0006  
WOOD SPACER  
(SB5ARD ONLY)

# Hardware Color Options

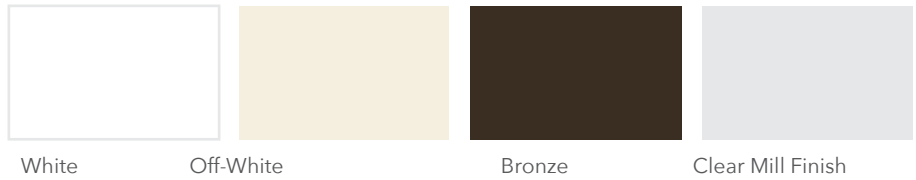
## Mullions



## WebbLok Security Box Fascia



## WebbLok Track



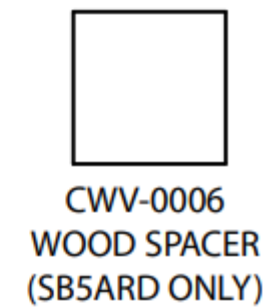
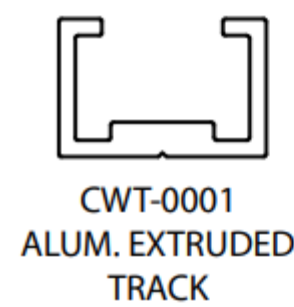
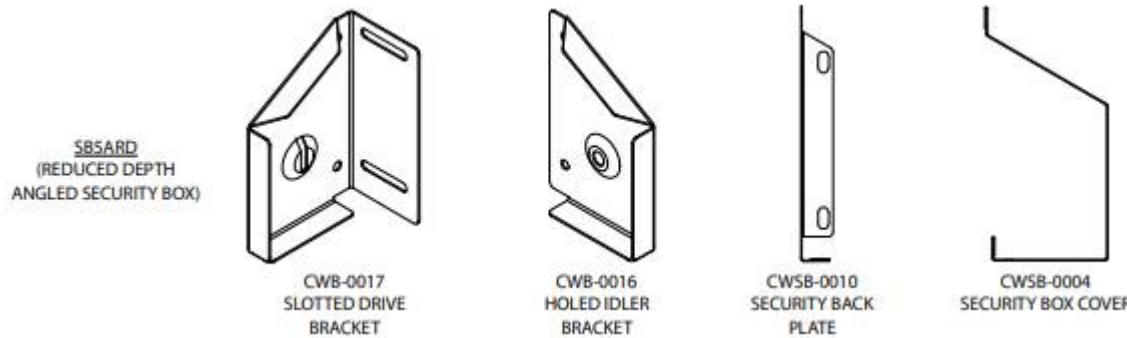
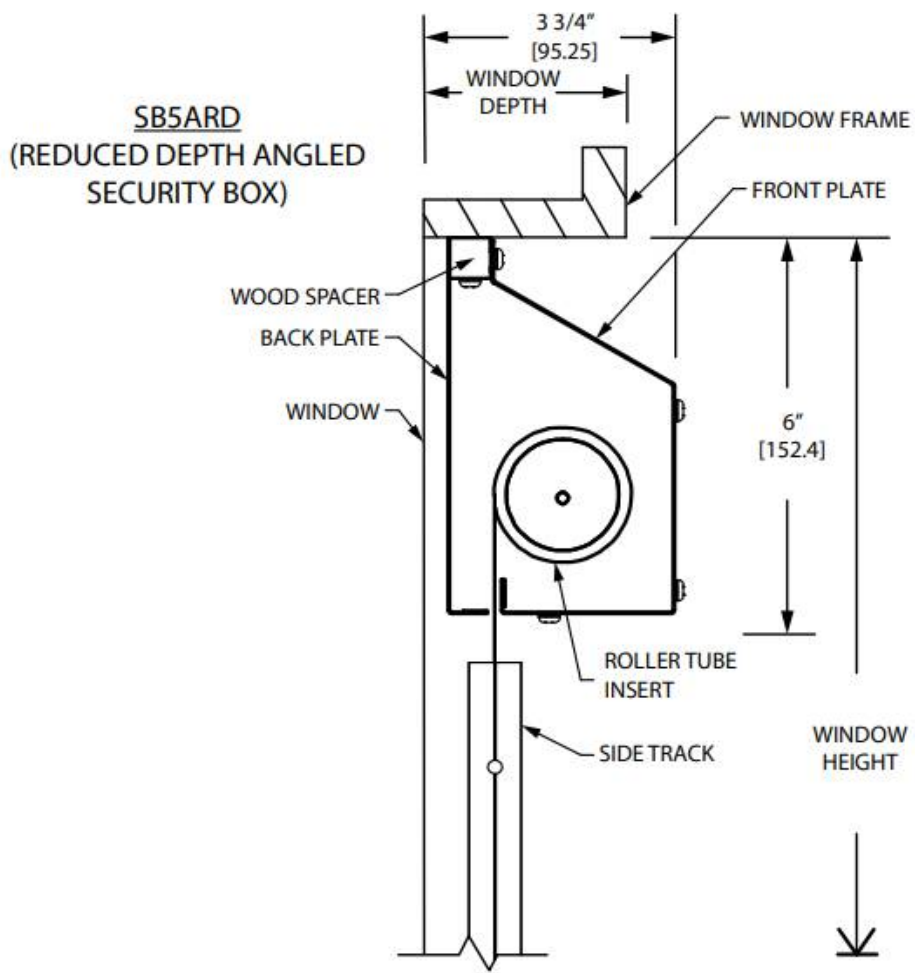
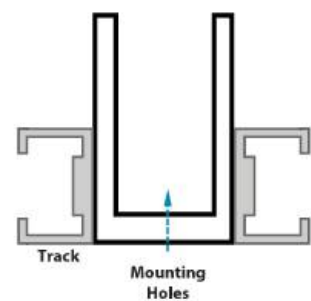
Due to variances among monitors and printers, the color represented may appear differently than the actual products.





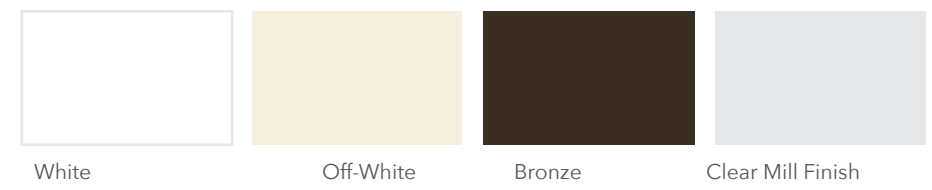
2. The “H” Mullion

- Dimensions: 1” x 1½” x 1/8” “U” Channel (*custom sizes available per project req.*)
- Specs:
  - o There are 3 mounting holes on the 1” face which allows for direct mounting onto an existing window mullion.
  - o Track is placed on either side and pre-mounted on the mullion.
  - o Pre-drilled holes are located at the top of the mullion for mounting bracket plates.



# Hardware Color Options

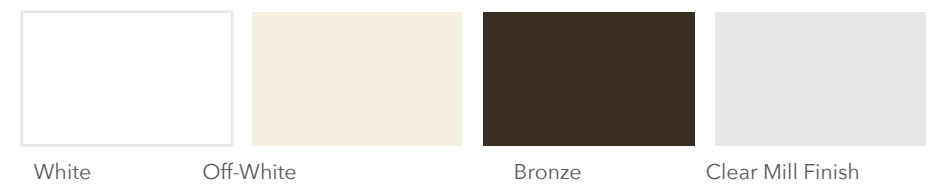
## Mullions



## WebbLok Security Box Fascia



## WebbLok Track



Due to variances among monitors and printers, the color represented may appear differently than the actual products.



# WebbLok Roller Shade

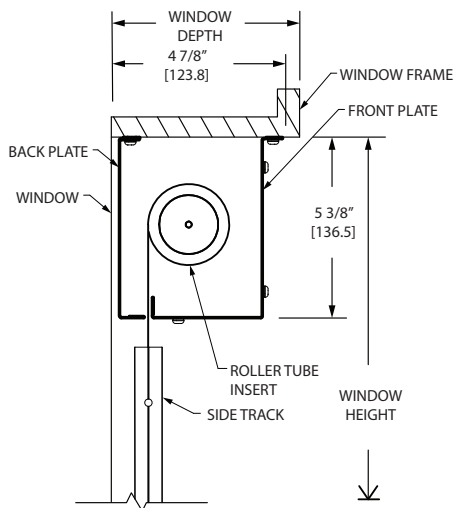
## Technical Data



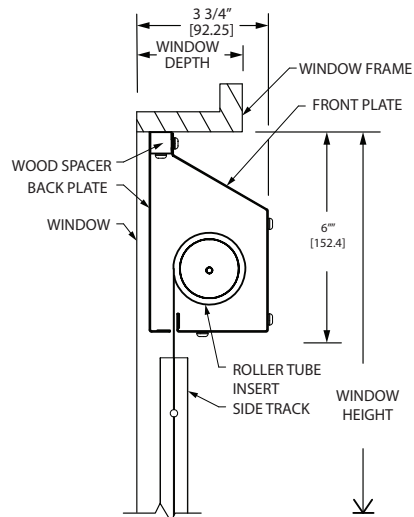
### FEATURES AND BENEFITS

- Designed for tamper resistance\* and durability
- Heavy-Duty Security Box and Back Plate Cover prevent tampering of shade hardware
- Cordless operation with no wands or chains
- Self-retracting with set stop locations
- Easy to clean and maintain without removing the shade
- Mullions available for outside mounted and multiple window applications

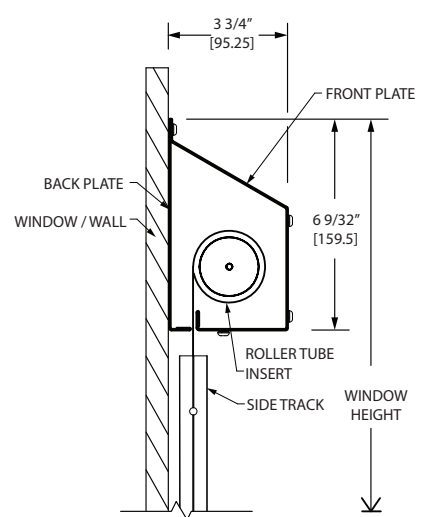
**SSB**  
(STANDARD SECURITY BOX)



**SB5ARD**  
(REDUCED DEPTH ANGLED SECURITY BOX)



**SB5A**  
(ANGLED SECURITY BOX)

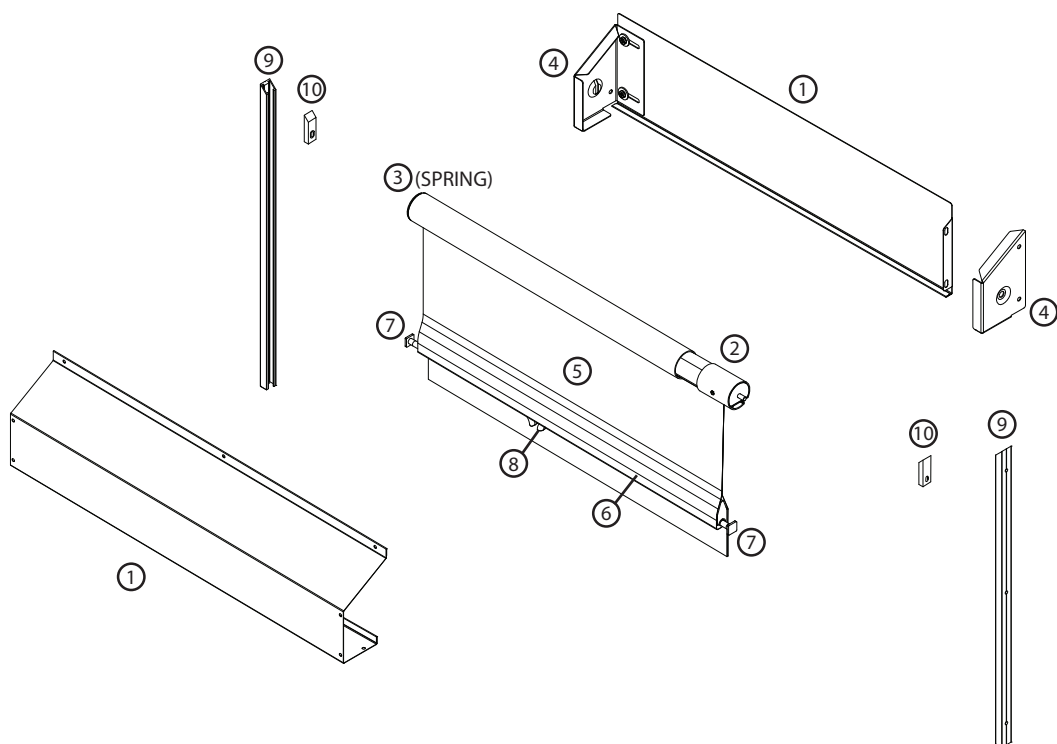


*\*This product does not guarantee patient safety.*

IPC.3530/REV.1

# WebbLok Roller Shade

## Technical Data



#	ITEM	ADDITIONAL INFORMATION	COLOR OPTIONS	
1	SECURITY BOX	Front and Back plate; galvanized steel with powder coat finish; Available in SSB, SB5A, or SB5ARD.	White Bronze	Off-White Silver
2	ROLLER TUBE	1.75" Diameter.	n/a	
3	SPRING	Positively tensioned blue spring steel with drive pin.	n/a	
4	BRACKETS	Inside/ Jamb Mount; Galvanized Steel with powder coat finish.	White Bronze	Off-White Silver
5	FABRIC	See fabric selection for all available options.	Visit WTShade.com	
6	BOTTOM RAIL	Secured in fabric, with finger clip release.	n/a	
7	BREAK AWAY END TIPS	Standard with each shade.	Black Plastic Only	
8	FINGER CLIPS		White Plastic Only	
9	GUIDE TRACKS	Aluminum channels with preset stops and angled top.	White Bronze	Off-White Silver
10	TRACK STOPPER	ABS insert that aligns with top of track edge.	White Black	
N/A	MULLION OPTIONS	Various mullion styles available (See Mullion Plan View on next page).	White Bronze Mill Finish	Off-White Silver

SERIES	MIN. SHADE WIDTH	MIN. SHADE HEIGHT	MAX. SHADE WIDTH	MAX. SHADE HEIGHT
WebbLok®	16"	36"	72"	**

**\*\* MAX SHADE HEIGHT: 96" max (or 2.5x width if less).**

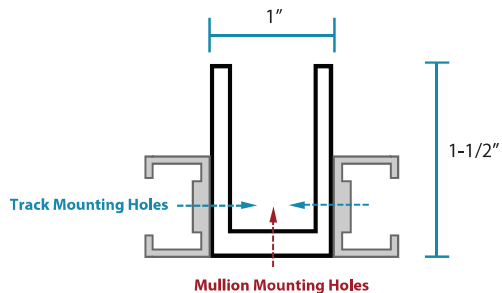
System Capabilities are for guideline purposes only based on WT 243 fabric and do not guarantee that a shade with any fabric can be made to these dimensions. Width and length may vary depending on selected shade fabric. Visit WTShade.com or contact Customer Service to verify system capabilities based on project specific selections.



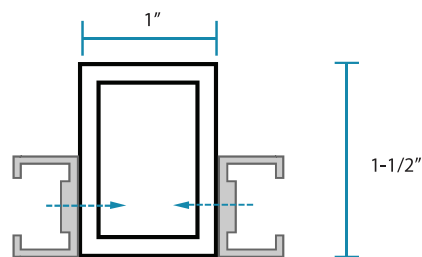
# WebbLok Roller Shade

## Technical Data

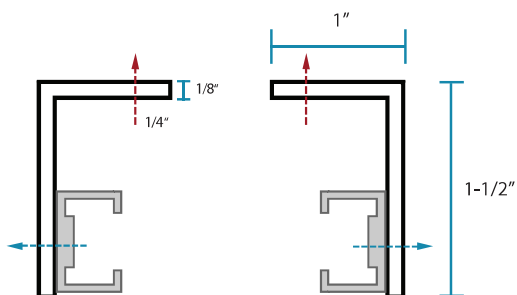
STANDARD MULLION SIZES WITH TYPICAL GUIDE TRACK PLACEMENT (CUSTOM SIZES AVAILABLE PER PROJECT REQ.)



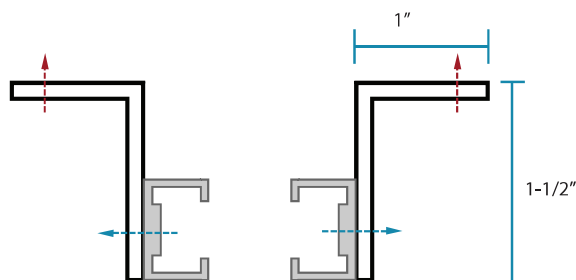
"H" MULLION  
CWM-0001



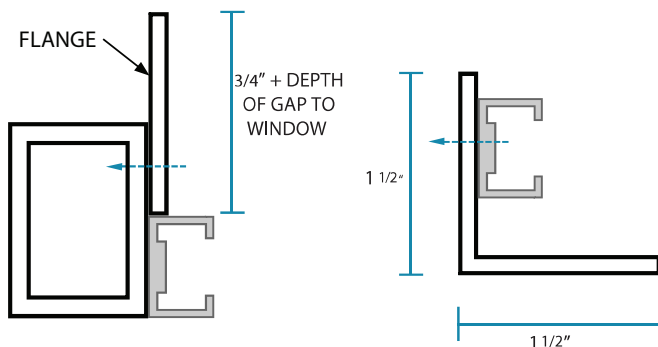
FLOATER MULLION  
CWM-0003  
(INSIDE MOUNT ONLY)



"L" MULLION LEG IN  
CWM-0002  
(SSB & SB5A-RD BOXES ONLY)

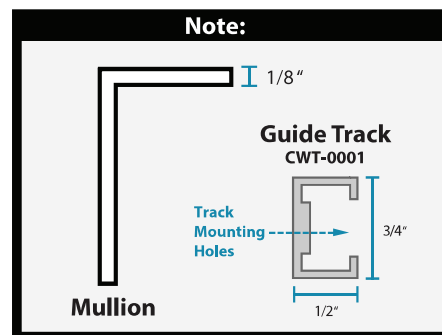


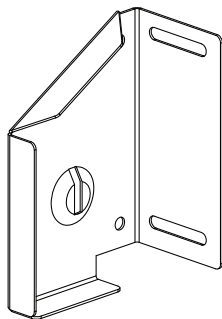
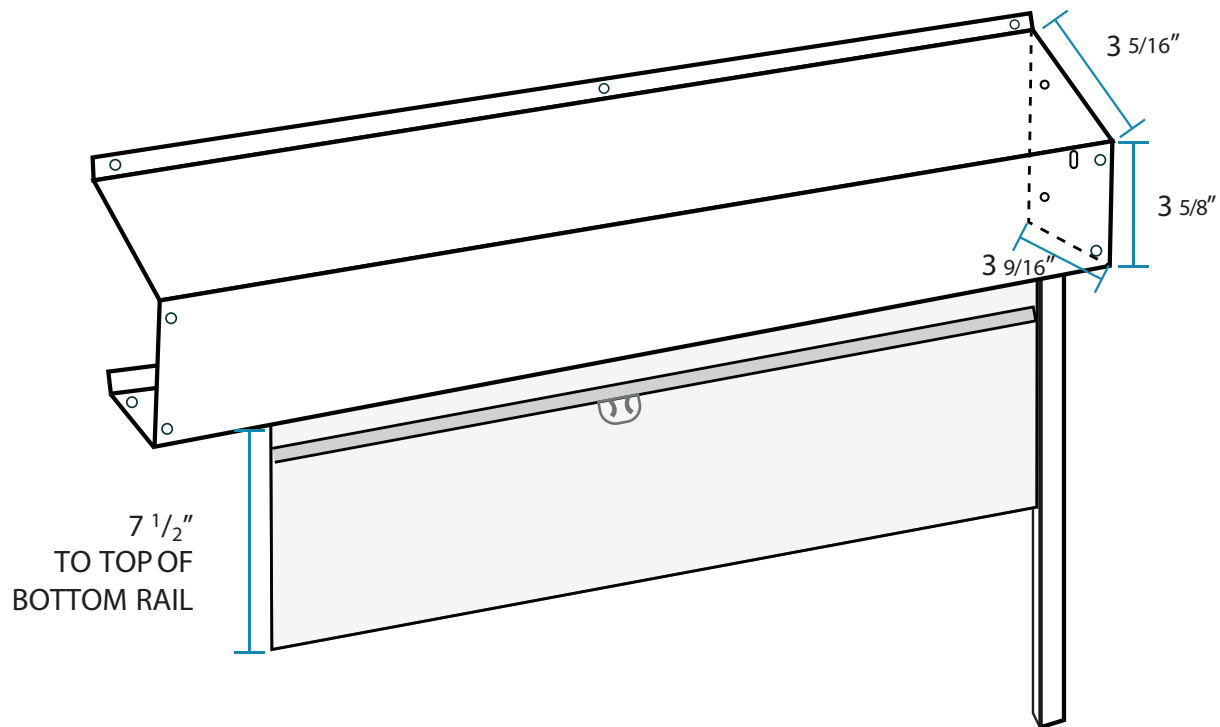
"L" MULLION LEG OUT  
CWM-0002



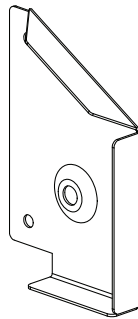
FLANGE MULLION  
CWM-0009  
(SHOWN W/ FLOATER)

PRIVACY "L" MULLION  
CWM-0010

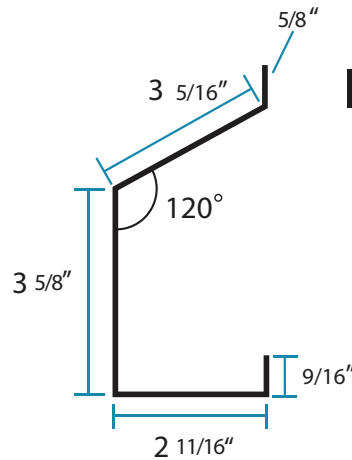




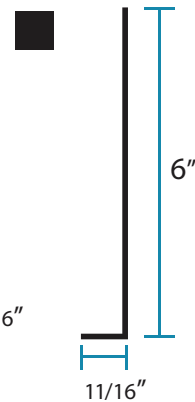
**Left Bracket Plate**




**Right Bracket Plate**



**Security Box**



**Back Plate**

$5/8" \times 5/8"$   
  
**Wood Top Lip Support**

Security Box to be 24 gauge galvanized steel unless specified. Standard powder-coat of security box and back plate available in white, off-white or bronze. Additional powder-coat colors available, charges may apply.

Industry standard  $1/4"$  space between fabric and track required for proper operation. Privacy mullion quoted upon request.

**CLICKEZE®**  
 PRIVACY SYSTEMS

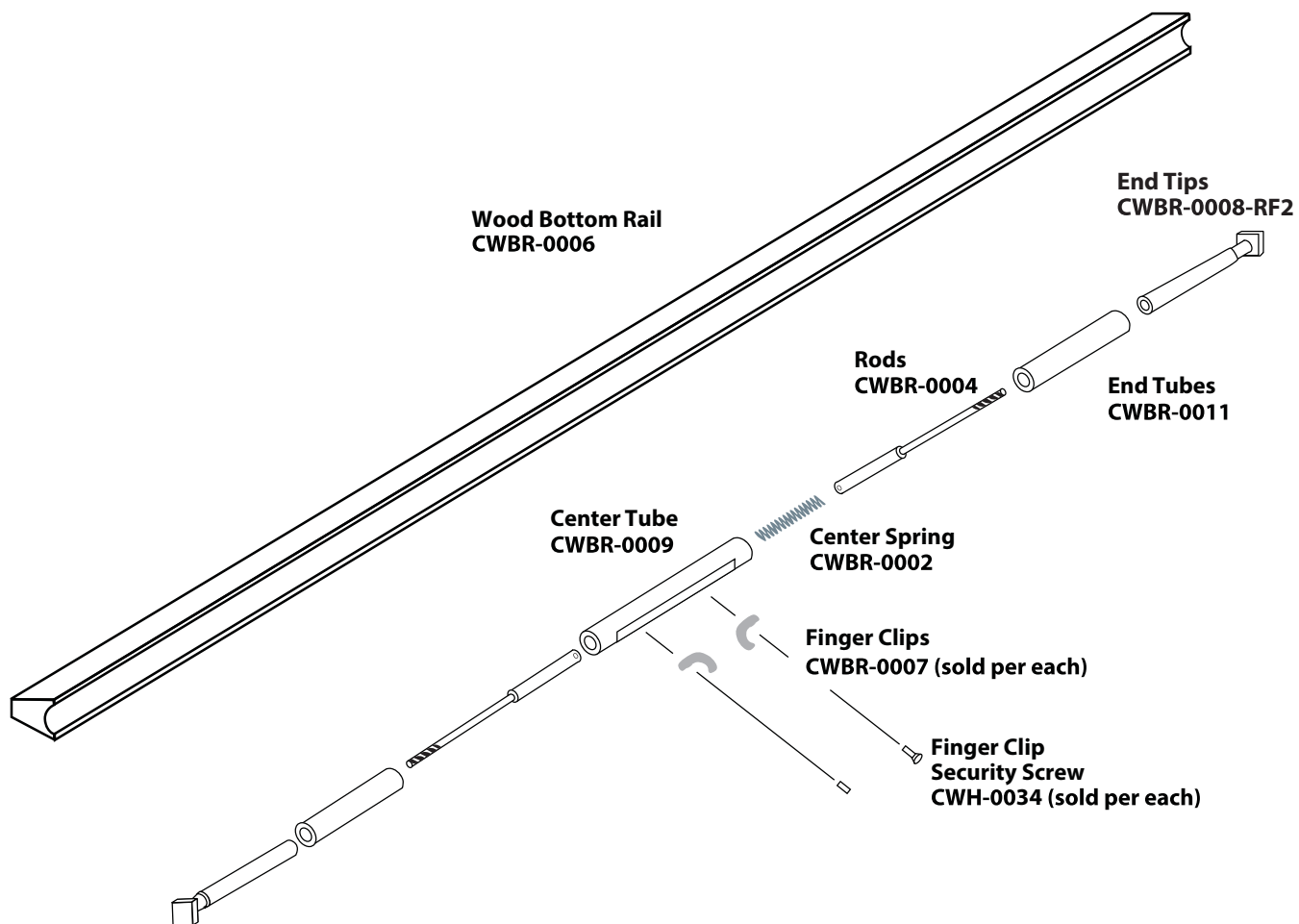
DATE: 10/19/2016

SCALE

DOC: CADCZ.048/R4

ANGLED SECURITY BOX  
 SB5A REDUCED DEPTH

**inpro®**





# Limited Lifetime Warranty – Inpro WT Shade Systems

---

## *Limited Warranty*

### **WHAT IS COVERED**

The product is warranted against defects in materials or workmanship for the time-period specified below; provided that the product was properly installed, the product was made or assembled exclusively from our materials and components, and our recommendations were followed with regards to limitations and specifications. This warranty extends only to the original purchaser of the product and for the initial installation only. The warranty term starts as of the invoice date.

### 25-YEAR LIMITED WARRANTY

- Clutch roller shades
- Motorized roller shades
- Wrapped frame fixed panels and fixed shades
- Shading enclosures including pocket, closure, closure mounts, sill channel, side channel, center channel, and light stop angle

### 10-YEAR LIMITED WARRANTY

- CF cordless roller shade springs
- WebbLok cordless roller shades and Secured Panels

### 5-YEAR MOTORIZED SOLUTION LIMITED WARRANTY

- Motorized components and electrical accessories

### **WHAT IS NOT COVERED**

The above warranty excludes the following:

- Bead chain
- Non-WT fabric. Contact fabric manufacturer for warranty terms and coverage.
  - Note – WT Shade fabrics are covered as part of the 25 or 10 year limited warranty
- COM fabric
- WT 900 fabric
- Batteries
- Wiring
- Normal wear and tear including loss of color intensity, discoloration, fading, or yellowing caused by prolonged exposure to direct sunlight, improper cleaning or maintenance, exposure to salt water
- Fading or degradation of digitally printed images
- Slight color variation
- Damage caused by abuse, accidents, alterations, misuse, neglect, acts of nature, improper handling, or failure to follow our instructions for installing or operating the product
- Labor or installation costs
- Freight/shipping damage

IPC.3476/Rev.2

# Limited Lifetime Warranty – Inpro WT Shade Systems

---

## **Third Party Items**

- Fabrics manufactured by third parties will be covered under their respective warranties\*

Mermet: <https://mermetusa.com/site/user/files/1/mermet-fabric-limited-warranty.pdf>

\*Warranties for fabric not listed above can be provided by our Customer Service upon request.

- Components and parts manufactured by third parties, may be similarly excluded from the limited warranty and Inpro makes no representation or warranty regarding such products.

## **DISCLAIMER OF IMPLIED WARRANTIES**

EXCEPT FOR THE APPLICABLE LIMITED WARRANTIES SET FORTH ABOVE, INPRO MAKES NO WARRANTY WHATSOEVER WITH RESPECT TO THE PRODUCTS, INCLUDING ANY (A) WARRANTY OF MERCHANTABILITY OR (B) WARRANTY OF FITNESS FOR A PARTICULAR PURPOSE WHETHER EXPRESS OR IMPLIED BY LAW, COURSE OF DEALING, COURSE OF PERFORMANCE, USAGE OF TRADE OR OTHERWISE. INPRO DISCLAIMS ALL, AND ASSUMES NO LIABILITY FOR, THE NONPERFORMANCE OF INCOMPATIBLE SYSTEM COMPONENTS OR ACCESSORIES OF ANY PRODUCTS.

## **REPAIR OR REPLACEMENT OF DEFECTIVE PRODUCTS**

In the unlikely event a product is found to not meet the applicable Inpro WT Shade Systems Limited Lifetime Warranty (subject to the conditions set forth in the Inpro Terms and Conditions of Sale), we will replace or repair any item found to contain material defects in material or workmanship at the time the product was manufactured by us. However, if a product is found to have been improperly installed, abused, altered, repaired, or subject to any use other than that which it was originally intended, the product may no longer be eligible for a warranty claim. In no event shall Inpro be liable for transportation costs to return the product, costs of removal or reinstallation of the product or incidental or consequential damages. Any alteration or repair not performed or authorized by Inpro will void this warranty. Some states do not allow the exclusion of consequential damages, so the above limitation or exclusion may not apply to you. This shall be the sole remedy of the purchaser under this warranty.

# Limited Lifetime Warranty – Inpro WT Shade Systems

---

## HOW TO MAKE A WARRANTY CLAIM

If you have a product that you believe is defective due to a material defect in the material, workmanship, or craftsmanship of the product, please follow these steps to make a warranty claim under the Inpro WT Shade Limited Warranty:

**NOTE TO END USERS: Contact your shading installer or dealer.** It is important and strongly advised that you have your product inspected by a professional shading installer. Many times, a professional installer will be able to make an adjustment or repair on-site and will not have to remove and send back your product. However, if your installer is not able to repair the issue, the product must be removed and sent back to us for inspection. It is important that the removal and handling of the shade be done by a shading professional in order to ensure that no additional damage is done that could void your warranty.

**1. Locate the order number associated with the product:** In order to make a warranty claim, you **MUST** provide the original order number (often times called the “W Number”) for the defective product. This number will begin with a “W,” and can be found on the ID tag located on the aluminum tube of the shade (access by completely unrolling the shade fabric and exposing the tube). It is important that the removal and handling of the shade be done by a shading professional in order to ensure that no additional damage is done that could void your warranty. We also recommend taking a photograph of the tag, so that you or the original purchaser can continue to refer to it later or to send to us.

**2. Contact us Immediately:** Once you have obtained the order number, Inpro should be contacted by the original purchaser to make a warranty claim. The original purchaser should call Customer Service at (877) 294-3580 or email [WTcustservice@inprocorp.com](mailto:WTcustservice@inprocorp.com). Once Inpro has recorded the claim, the original purchaser will be furnished with a Return Goods Authorization Number (“RGA”). This number will be used to track the status of the claim and will be used to identify any products that have been returned to us.

**3. Return the defective items to us:** In order to repair or replace the defective item, we will need to inspect the product to determine the cause of the issue. In order to do so, the shading product must be uninstalled and packaged for shipping. If you do not feel comfortable performing such uninstallation, please contact your shading installer for help. Inpro will not be liable or responsible for the costs or potential damage of the uninstallation, the materials used to package the product, or the shipping costs to return the product to us. All boxes and packages in regard to the claim **MUST** be marked with the corresponding RGA number. Items received with no RGA number will be returned to sender. Please send all returns to: WT Shade, 12830 Virkler Dr - Suite 500, Charlotte, NC 28273 ATTN: WARRANTY RGA# \_\_\_\_\_.

**4. Inspection of the Return:** Within a reasonable time after receipt, we will inspect the returned product and determine the nature of any defect. We will then contact the original purchaser to discuss the results of our investigation.

**Questions?** If at any time you have questions about this warranty or how to make a warranty claim, please contact WT Shade Customer Service at (877) 294-3580 or email [WTcustservice@inprocorp.com](mailto:WTcustservice@inprocorp.com).



# Care, Clean-up and Maintenance:

## Inpro WT Shade Systems

---

Once installed, Roller Shades require very little care and maintenance. In order to prolong the life of your shades and keep them looking beautiful, some routine dusting may be required. Dust and dirt on your solar fabric can affect the color, the reflective properties, and even clog the space between the threads and effect the openness, and so removing it will be the main requirement in care.

### FABRICS

- Gently remove dust from the surface of the fabric by using a feather duster or soft cloth.
- Use a low suction vacuum with soft attachment for hard-to-reach areas or to remove dust between threads.
- Compressed air may be used to blow dust away from between threads.
- For spot cleaning, use a soft damp cloth. Mild detergent may be added for more stubborn spots. Shades should be fully extended and allowed to dry completely before being operated.

**Care Tip:** Gently rub a non-static dryer sheet over your shade material to help prevent the collection of dust.

- NEVER use harsh detergents or abrasive cleaners, such as alcohol, bleach or even baby wipes, which may damage, scratch or discolor the fabric.
- NEVER use a cloth which contains magnets, like many commercially sold dusting mitts. Magnets can damage certain types of fabric backings or cause motor malfunctions.
- NEVER clean windows with shades lowered. Always roll the shades up and away from the glass so that spray mist from glass cleaners does not damage the fabric.
- NEVER install shades in areas that are exposed directly to the elements. All WT Shade products are intended for INDOOR USE ONLY.
- NEVER rub fabric so hard as to damage the weave. Blotting is better.
- NEVER remove fabric from the shade tube without first contacting WT Shade. Removing the fabric may void your warranty

### HARDWARE

For general cleaning, use Antibacterial Fantastik® All Purpose Cleaner Heavy Duty with a clean, lint-free cloth and wipe clean. Repeat process if stains remain, and rinse with water if cleaning product residue remains. For all other cleaners and disinfectants, reference the product label to confirm use on plastic or powder coated metal material to avoid damage or discoloration.

Guide tracks may be lightly sprayed (inside) using silicone lubricant only. NEVER use petroleum-based lubricant.

NOTE: Any reference to a specific branded product does not constitute an endorsement by Inpro®. No long-term testing has been performed.