



## Cubicle Curtain 2000 Track System

Phone: 403-242-9948  
Toll Free: 1-866-664-4267  
Fax: 403-313-9230

[www.gicor.com](http://www.gicor.com)

Suite 106, 1409 Edmonton Trail NE  
Calgary, AB, Canada T2E 3K8

### Window Coverings

Commercial  
Residential  
Automated / Motorized  
LEED / Green products

### Home Automation

Home theatre / AV  
Lighting controls  
Multimedia integration  
Green solutions

### Interior Furnishings

Area rugs  
Upholstered goods  
Case goods  
Bar stools  
Bedding

### Interior Design

Project management  
Renovations  
Design consultants

### Procurement Services

Product specifications  
Vendor evaluations  
Purchasing services  
Installation

16 gauge extruded aluminum

- Anodized Aluminum Finish.
- Approx. 7/8" x 1 1/4".



The channel is the actual tracking that the carrier rollers slide up and down. It comes in a standard 16' foot length and can be bent and or cut into whatever size lengths to accommodate any room layout. It can be attached to the ceiling using a number of methods.

1. If you have a sheetrock or plaster ceiling the curtain can be attached directly to the ceiling by drilling a hole through the track in the desired location and running a screw into a sheetrock anchor. You could alternatively find the ceiling joist and place a longer wood screw through the sheetrock and into the wood ceiling joist.
2. It can be attached to a grid type ceiling also known as acoustical tiles or hanging ceilings. This can be done by drilling a hole through the track and use a sheet metal screw directly into the grid.
3. Truss style and/or vaulted ceilings. If the ceiling trusses are flat you can attach the track directly to the truss with whatever fastener best suits the application. If the trusses are uneven or if the ceiling has a vault or pitch to it you will need to suspend the curtain track. To do this you will need to purchase the ceiling flanges, suspension tubes and screw inserts. These are basically a mounting flange that you mount to the ceiling and then a tube that drops down for the curtain track to attach to. You cut the suspension tubes off at the height that the track needs to hang, place a screw insert into the end of the tube and then run a screw through the track into the end of the suspension tube/screw insert.
4. Wall mount. The nylon wall mount that we carry can be used to hold the curtain track at whatever level you need and attaches to the wall with whatever fasteners that fit your application. You might use these wall mounts in conjunction with suspension tubes to stabilize a suspended tracking system also by putting them where ever the track come close enough to the wall to utilize one of them.
5. The curtain tracking has also been installed inset into the sheetrock to make a flush ultra modern look on new installations.

# 2000 Series

**2000 Series cubicle curtain track is available for ceiling mount or suspended mount applications.**

**2001 Track** – Extruded aluminum 1-1/8" wide x 3/4" high entirely enclosed track except for slot in bottom.  
**2005 Carrier** – Nylon swivel eye carrier engineered for quiet, effortless movement.

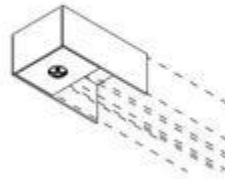


2001 Track



2005 Carrier

**2007 Removable End Stop** – Track end stop used to stop 2005 carriers from gliding off end of track. Complete with pull out tab designed for adding or changing carriers.  
**2008 Hook** – Steel cubicle hook for attachment of curtain to carrier.



2007 Removable End Stop

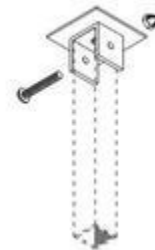


2008 Hook

**2011 Suspension Tubing** – Anodized aluminum square tubing used for rigidly suspending #2001 track.  
**2013 Ceiling Bracket** – Attaches to top end of suspension tubing and anchors to ceiling.

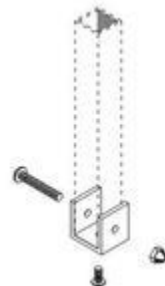


2011 Suspension Tubing

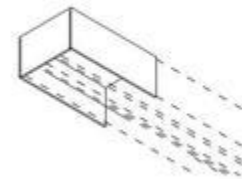


2013 Ceiling Bracket

**2014 Track Bracket** – Attaches to bottom end of suspension tubing and 2001 track.  
**2015 End Stop** – Track end stop used to stop 2005 carriers from gliding off end of track.

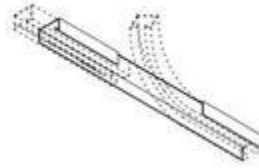


2014 Track Bracket



2015 End Stop

**2018 Radius Connector Sleeve** – Connects straight track to curved section of adjoining tracks. Does not allow 2005 carriers to travel from one track to another.  
**2021 PVC Drop** – 18" PVC drop attaches to 2005 to drop top of curtain 18" to allow light and airflow through the room.

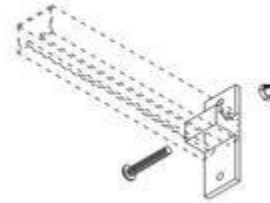


2018 Radius Connector Sleeve



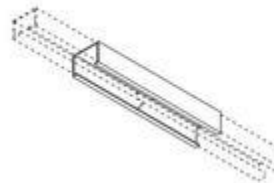
2021 PVC Drop

**2042 Wall Bracket** – To be used in place of 2007 and 2015 end stop on suspended tracks, Wall bracket mounts track to wall.



2042 Wall Bracket

**2055 Splice** – Anodized aluminum 4" long. Correctly aligns sections of 2001 track for smooth operation.



2055 Splice

# Cubicle Curtain 2000 Track Layouts

