

GiCor lodging projects ltd.

**106, 1409 Edmonton Trail NE,
Calgary, AB. T2E 3K8**

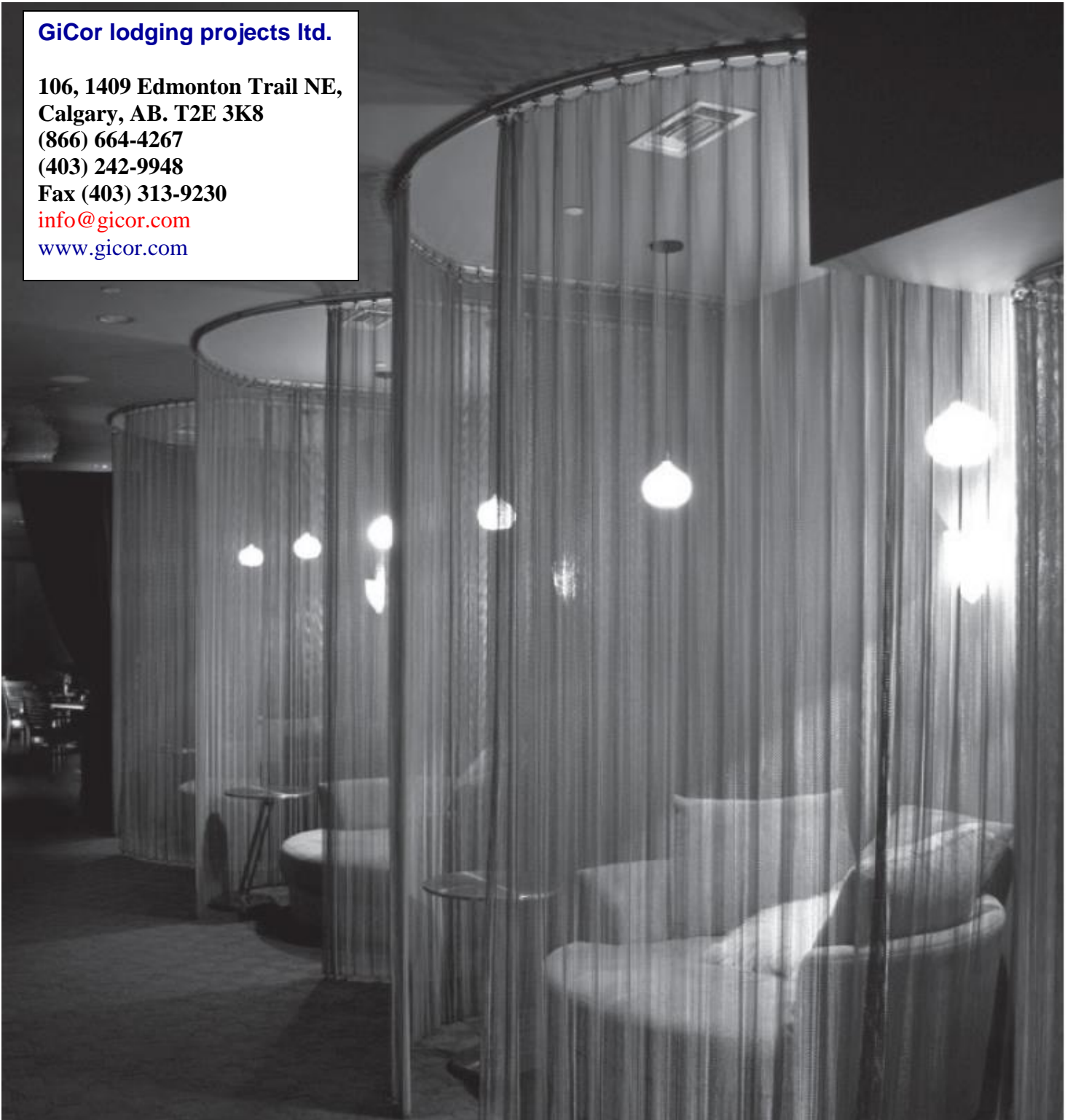
(866) 664-4267

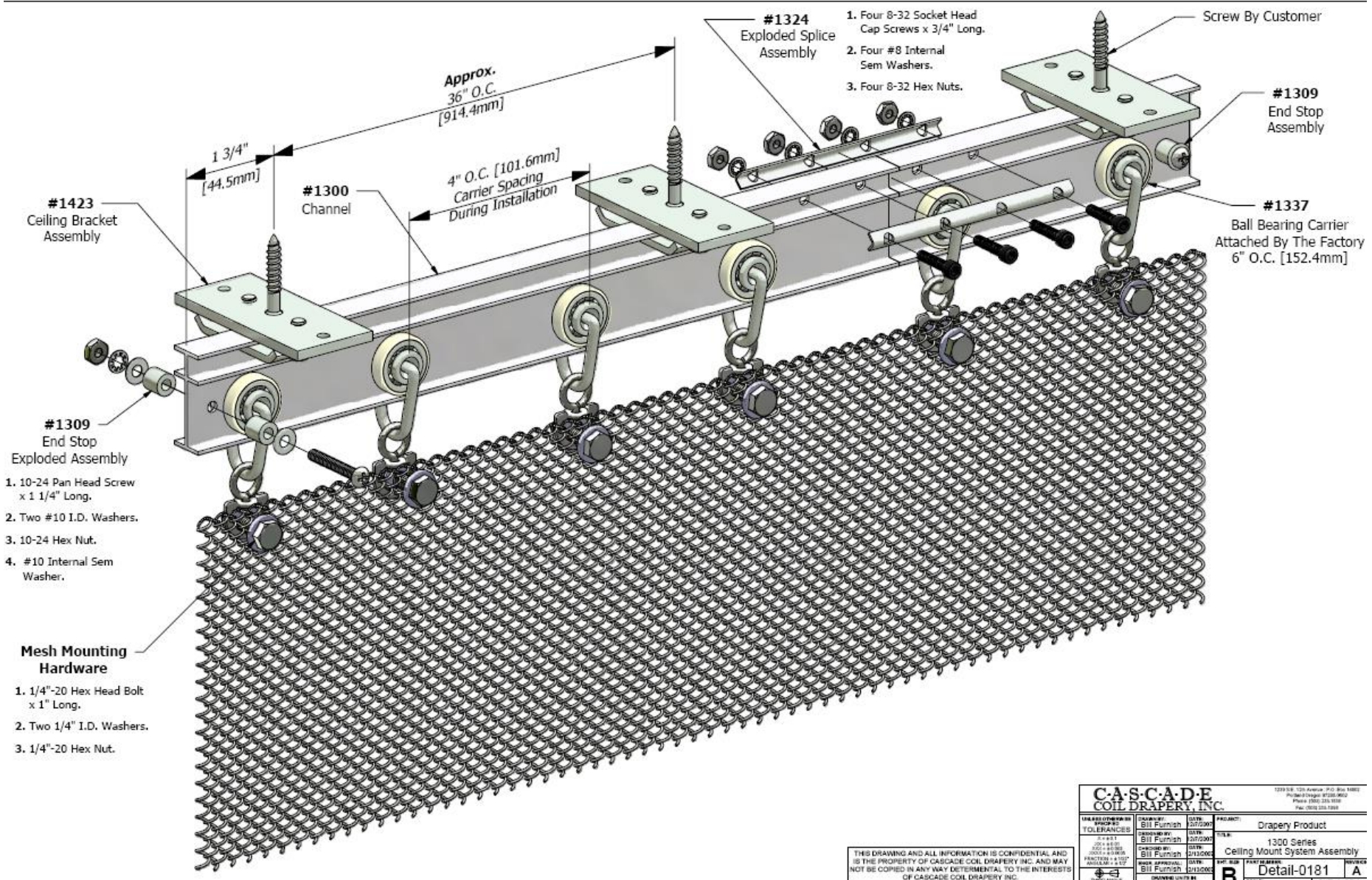
(403) 242-9948

Fax (403) 313-9230

info@gicor.com

www.gicor.com





#1423
Ceiling Bracket
Assembly

#1309
End Stop
Exploded Assembly

1. 10-24 Pan Head Screw x 1 1/4" Long.
2. Two #10 I.D. Washers.
3. 10-24 Hex Nut.
4. #10 Internal Sem Washer.

**Mesh Mounting
Hardware**

1. 1/4"-20 Hex Head Bolt x 1" Long.
2. Two 1/4" I.D. Washers.
3. 1/4"-20 Hex Nut.

Approx.
36" O.C.
[914.4mm]

#1300
Channel

4" O.C. [101.6mm]
Carrier Spacing
During Installation

#1324
Exploded Splice
Assembly

1. Four 8-32 Socket Head Cap Screws x 3/4" Long.
2. Four #8 Internal Sem Washers.
3. Four 8-32 Hex Nuts.

Screw By Customer

#1309
End Stop
Assembly

#1337
Ball Bearing Carrier
Attached By The Factory
6" O.C. [152.4mm]

THIS DRAWING AND ALL INFORMATION IS CONFIDENTIAL AND IS THE PROPERTY OF CASCADE COIL DRAPERY INC. AND MAY NOT BE COPIED IN ANY WAY DETERMINAL TO THE INTERESTS OF CASCADE COIL DRAPERY INC.

CASCADE COIL DRAPERY, INC.		1224 N.E. 125 Avenue, P.O. Box 1880 Portland, Oregon 97208-0880 Phone (503) 255-9338 Fax (503) 255-1888	
DESIGNED BY TOLERANCES	DATE 10/27/2007	PROJECT Drapery Product	
DRAWN BY 1/8" ± 0.005 1/16" ± 0.005 20/32 ± 0.005	DATE 10/27/2007	TITLE 1300 Series Ceiling Mount System Assembly	
CHECKED BY 1/8" ± 0.005 1/16" ± 0.005 20/32 ± 0.005	DATE 10/15/2006	REVISED BY 10/15/2006	REVISION A
APPROVED BY DATE 10/15/2006	DATE 10/15/2006	SCALE B	SHEET 1 OF 1