



TEXTILE
TRIMMINGS

Shaughnessy Metal Collection

1" & 1½" - Pewter and Chrome

Shaughnessy Metal Collection

CRYSTAL FINIAL:
A Brilliant cut pattern makes
this a beautiful decorative
finial for 1 1/2 Inch
diameter rods.

Finials for 1 Inch Diameter Rods



Cartier Finial / SH1508
Size: 2 3/4" x 2 1/16"
Available Finishes: .60 | .99



Baillie Finial / SH1504
Size: 2 3/4" x 2 1/16"
Available Finishes: .60 | .99



Connaught Finial / SH1502
Size: 2 1/4" x 2"
Available Finishes: .60 | .99



Dunbar Finial / SH1505
Size: 1 3/4" x 1 1/4"
Available Finishes: .60 | .99



End Cap / SH1400
Size: 3/4" x 1 3/16"
Available Finishes: .60 | .99

Components for 1 Inch Diameter Rods



Adjustable Loop Bracket / SH1203
Adjustable Projections: 2 1/2" - 3 1/2" (Cut to size)
Base Diameter: 2 1/8" Total Length: 4 1/4"
Available Finishes: .60 | .99



Adjustable Open Cup Bracket / SH1216
Adjustable Projections: 2 1/2" - 6" (Cut to size)
Base Diameter: 2 1/8" Total Length: 6 3/4"
Available Finishes: .60 | .99



Heavy Duty Adjustable Bracket / SH1240
Adjustable Projections: 4" - 5 1/2"
Base Height: 3 3/4"
Available Finishes: .60 | .99



Heavy Duty Extension Bracket / SH1270
Adjustable Projections: 6 1/2" - 8"
Base Height: 3 3/4"
Available Finishes: .60 | .99



Heavy Duty Double Bracket / SH1280
Adjustable Projections: 4" - 5 1/2" & 6 1/2" - 8"
Base Height: 3 1/4"
Available Finishes: .68 | .99

Rings and Rosettes for 1 Inch & 1 1/2 Inch Diameter Rods



**Flat Ring with Loop / SH1350
for 1" Diameter Rods**
Inside Diameter: 1 5/8"
Feature: Nylon liner for smooth draw
Available Finishes: .60 | .99



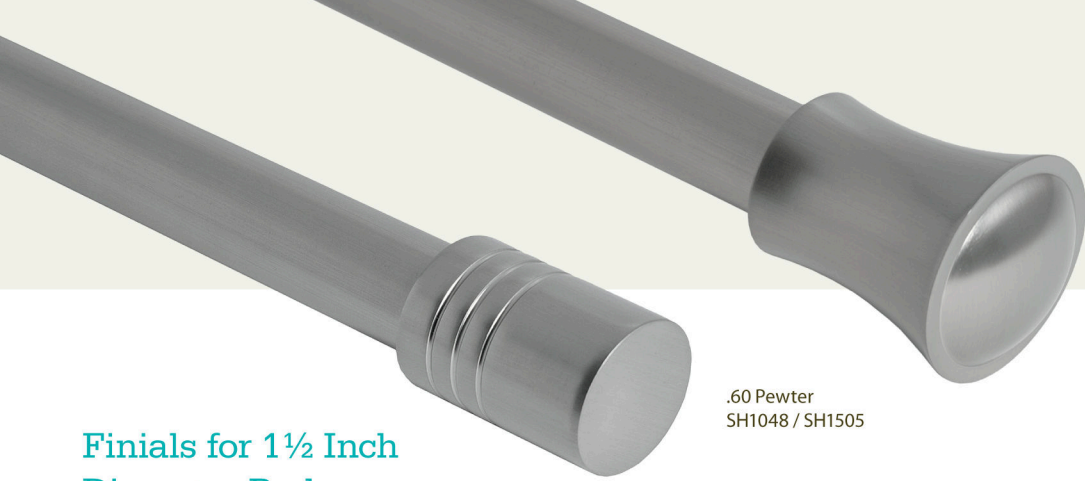
**Flat Ring with Loop / SH3350
for 1 1/2" Diameter Rods**
Inside Diameter: 2"
Feature: Nylon liner for smooth draw
Available Finishes: .60 | .99



Small Sphere Rosette / SH5220
Diameter: 1/2"
Available Finishes: .60 | .99



Large Sphere Rosette / SH5240
Diameter: 1 1/4"
Available Finishes: .60 | .99



.60 Pewter
SH1048 / SH1502

.60 Pewter
SH1048 / SH1505

Finials for 1½ Inch Diameter Rods



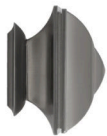
Crystal Finial / SH3515
Size: 3 3/4" x 2 7/8"
Available Finishes: .60 | .99



Glass Globe Large Finial / SH3508
Size: 3 3/4" x 2 5/8"
Available Finishes: .60 | .99



Baillie Large Finial / SH3504
Size: 3 3/4" x 2 5/8"
Available Finishes: .60 | .99



Trafalgar Large Finial / SH3507
Size: 3" x 3 3/4"
Available Finishes: .60 | .99



Connaught Large Finial / SH3502
Size: 3 1/4" x 2 7/8"
Available Finishes: .60 | .99



Dunbar Large Finial / SH3505
Size: 2 3/4" x 2"
Available Finishes: .60 | .99



End Cap / SH3400
Size: 1" x 1 11/16"
Available Finishes: .60 | .99

Fling Rods



Fling Rod / SH5340 / SH5360
Length: 40" (SH5340) & 60" (SH5360)
Available Finishes: .60 | .99

Components for 1½ Inch Diameter Rods



Adjustable Loop Bracket / SH3203
Adjustable Projections: 2 1/2" - 3 1/2" (Cut to size)
Base Diameter: 2 1/8" Total Length: 4 1/2"
Available Finishes: .60 | .99



Adjustable Open Cup Bracket / SH3216
Adjustable Projection: 2 1/2" - 6" (Cut to Size)
Base Diameter: 2 1/8" Total Length: 7"
Available Finishes: .60 | .99



Heavy Duty Adjustable Bracket / SH3240
Adjustable Projection: 4 1/4" - 5 3/4"
Base Height: 3 3/4"
Available Finishes: .60 | .99



Heavy Duty Extension Bracket / SH3270
Adjustable Projections: 6 3/4" - 8 1/4"
Base Height: 3 3/4"
Available Finishes: .60 | .99



Heavy Duty Double Bracket / SH3280
Adjustable Projections: 4 1/4" - 5 3/4" & 6 3/4" - 8 1/4"
Base Height: 3 3/4"
Available Finishes: .60 | .99



1" Decorative Metal Rod - 10Ft / SH1120
Length: 120"
Available Finishes: .60 | .99



1" Decorative Metal Rod - 8Ft / SH1096
Length: 96"
Available Finishes: .60 | .99



1" Decorative Metal Rod - 4Ft / SH1048
Length: 48"
Available Finishes: .60 | .99



.99 - Chrome

.60 - Pewter



1 ½" Decorative Metal Rod - 4Ft / SH3048
Length: 48"
Available Finishes: .60 | .99



1 ½" Decorative Metal Rod - 8Ft / SH3096
Length: 96"
Available Finishes: .60 | .99



1 ½" Decorative Metal Rod - 10Ft / SH3120
Length: 120"
Available Finishes: .60 | .99



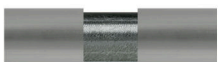
Bending for 1" and 1 ½" Diameter Rods Available

All Decorative Metal Rods in the Shaughnessy Metal Collection can be bent to custom specifications.
Available Finishes: .60 | .99



**TEXTILE
TRIMMINGS**

1015 Clark Drive,
Vancouver, BC, Canada V5L 3K1
Tel: 604.251.2401 Fax: 604.251.2499
TF Tel: 1.800.663.0601 TF Fax: 1.800.663.0634
Email: info@textiletrimmings.com
www.textiletrimmings.com



Steel Splice / SH3000.61
Use to splice together 1 ½" diameter rods
Size: 1 ½" | Length: 12 Inches



Steel Splice / SH3000.61
Use to splice together 1" diameter rods
Size: 1" | Length: 12 Inches



Adjustable Corner Connector / SH1600
Feature: Plastic inserts | Size: 1 ¾" x 1 ¾"

Adjustable Corner Connector / SH3600
Feature: Plastic inserts | Size: 2 ½" x 2 ½"