

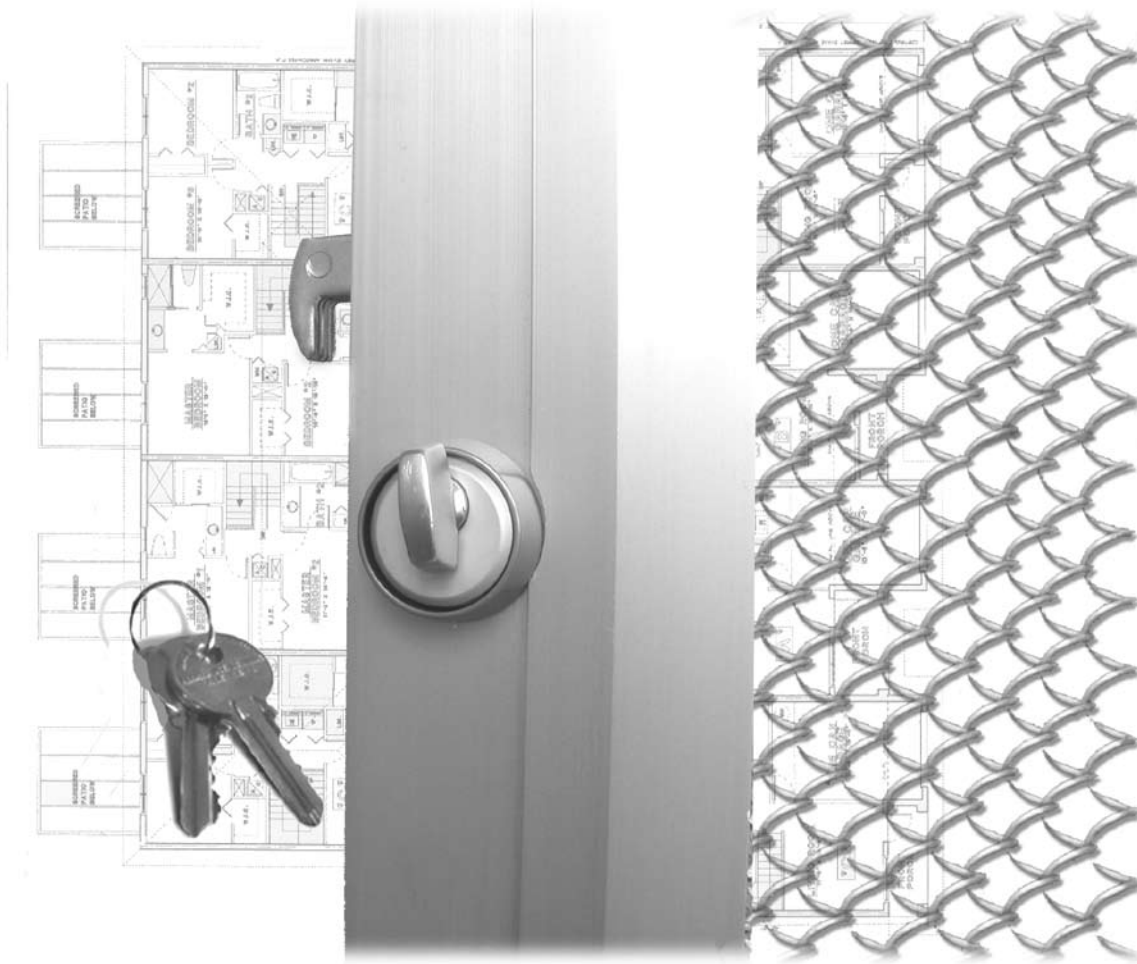


CASCADE COIL DRAPERY

TM

Flexible Woven Wire

Durable * Attractive * Lightweight * See-Through Advantage
Custom Manufactured for Easy Installation

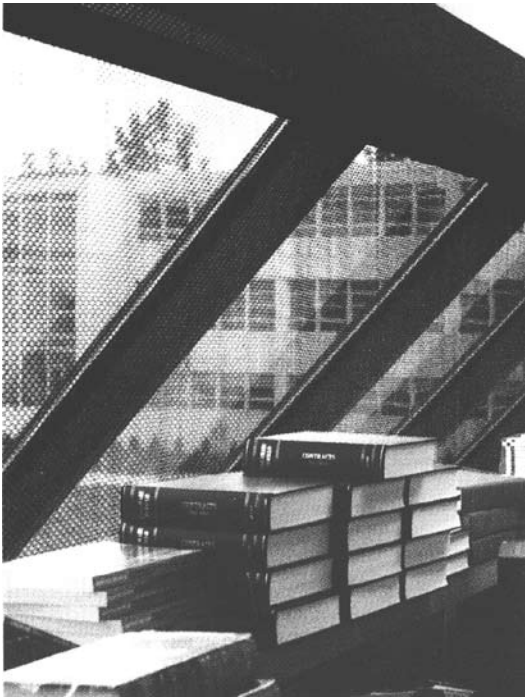


**S
E
C
U
R
I
T
Y**

Used in Restaurants * Retail Stores * Nightclubs * Offices
Schools * Warehouses * Malls * Sports Centers * and more...

GiCor lodging projects ltd.

106, 1409 Edmonton Trail NE, Calgary, AB. T2E 3K8
(866) 664-4267 • (403) 242-9948 • Fax (403) 313-9230
info@gicor.com • www.gicor.com



*Bookstore Security Application
American University, Washington D.C.*

Security Applications

Cascade Coil Drapery's Security Systems offer cost efficient semi-security. Wire coils are interwoven to provide exceptional material strength and "see-thru" contemporary style. Heavy-duty track and end channels elegantly frame the wire mesh. Variable components such as footbolts and locks allow design flexibility to fulfill specific security needs for each application. A variety of wire materials are available in several weave sizes. Stainless steel or aluminum in 3/8" or 1/2" weaves are recommended for security.

Options Provide Customized Solutions

Cascade Coil custom manufactures each Security System to meet individual requirements. With many component options available, Cascade offers solutions for a variety of applications.

- Area reduction or section closures in restaurants
- Storefront closures in shopping malls
- Secure display counters
- Hazardous material storage in supply closets
- Co-located technical space
- Dividers separating public and private areas
- Attractive deterrent behind large display windows

Popular Solution

Cascade Coil Drapery has been specified by designers and architects around the world for over 40 years. This unique wire mesh fabric provides a beautiful and effective means of decorating, partitioning, and securing facilities.

Features

Cascade Coil Drapery is fireproof and easy to install. This durable, lightweight wire fabric does not require heavy support. It allows free airflow for HVAC. A variety of weaves, base metals, and finishes are available to create a strong visual appeal. The continuous interwoven coils provide a strong screen, which will act as a deterrent against break-ins and vandalism.



The open weave allows security guards to view activities within a store when closed. The decorative coil drapery will not block views or discourage window shopping as do standard security gates. Security draperies may easily be opened and closed manually or with optional motorized track systems.



*Retail Security Application
Rose Garden Arena, Portland OR*



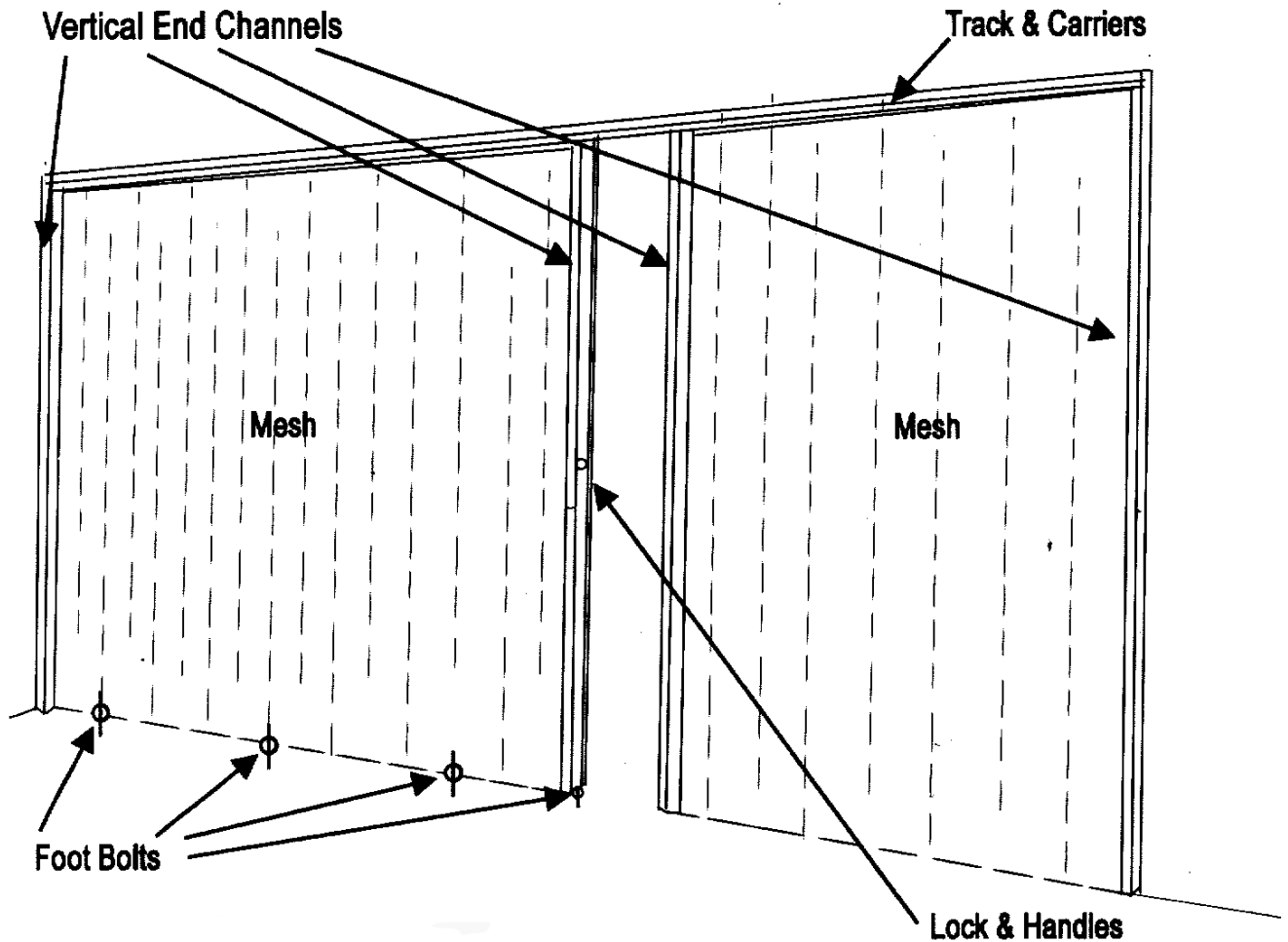
Arrowhead Credit Union
San Bernardino, CA

Designing a Security System

Cascade Coil Drapery Security Systems are created by selecting a variety of components:

- *Wire Drapery Fabrics*
- *Tracks & Carriers*
- *Locks & Footbolts*
- *Curved Track & Vertical Supports if required*
- *Optional Motorized Tracks*

Cascade's technical sales department can assist in the selection of wire fabric, tracks, locks, channels and other components to meet security requirements. Each component will be custom manufactured, labeled, and packaged for fast and easy installation. Security draperies will arrive pre-assembled with carriers, locks, and vertical channels.



Manufactured in the USA by skilled craftsmen.



Selecting the wire fabric

Cascade Coil offers a wide variety of weaves, base metals, and finishes to customize a Security System.



Base Materials

With strength, durability, and weight considerations, **steel**, **stainless steel** or **aluminum** base metals are recommended for security. **Aluminum** is recommended for large openings because it is lightweight and easy to maneuver.

Weave and Gauge

Cascade Coil manufactures drapery from a delicate 3/32" to a bold 1/2" weave, with a wide range of wire gauges. For optimal security, visibility, and ventilation, 1/2" or 3/8" weaves are recommended. Typically 3/8" and 1/2" weaves are manufactured from 15 gauge aluminum wire or 16 gauge steel wire.



Finishes

These durable, natural metal mesh finishes are recommended:

Brite Pearl Gray or Brightened Aluminum, Stainless Steel, Silver Tin Plated Steel, and Nickel Plated Steel

Cascade Coil also offers custom sprayed finishes. For maximum durability, clear anodized aluminum channels and hardware are usually not custom finished.

Fullness

Fullness is the amount of material in excess of the opening width. At zero fullness, the mesh would be too taut for security applications, therefore an additional 3% fullness is added.

Fabric Details*

Product Number	Metal	Weave	Gauge	Approx. Weight (Lbs/100sqft)
SS060160	Stainless Steel	3/8"	16	108
SS080160	Stainless Steel	1/2"	16	77
A060150	Aluminum	3/8"	15	52
A080150	Aluminum	1/2"	15	37
T060160	"Silver" Tin Steel	3/8"	16	115
T080160	"Silver" Tin Steel	1/2"	16	90
N060160	Brite Nickel Steel	3/8"	16	144
N080160	Brite Nickel Steel	1/2"	16	107
S060160	Steel Sprayed	3/8"	16	98
S080160	Steel Sprayed	1/2"	16	77

*For pricing and additional weaves, see our Published Price List



Track and Carriers

Cascade Coil offers several track and carrier systems. Security track may also be used for curved openings. Bottom tracks are also available, however, a top track with footbolt locks is sufficient for most applications. Locking footbolts secure the bottom edge of the wire fabric to a floor or counter.

Secura Track

Recommended for most security applications, Secura Track is constructed from heavy duty 16 gauge steel or clear anodized aluminum.

Secura Track offers a smooth roll system for easy opening and closing. Both 45° and 90° curves, as well as custom manufactured curves are available in galvanized steel only. Carriers are attached to the mesh at 6" intervals unless otherwise specified. Custom sprayed track finishes are available.

Easy to install, the track is secured to the ceiling or structure with screws. The carriers are pre-attached to the fabric which is then easily inserted into the track. Wall and ceiling brackets are also available.



T075X Galvanized Steel Track

T085X Clear Anodized Aluminum Track

Heavy Duty I-Beam

Recommended for small security applications, I-Beam track is made of clear anodized aluminum and can easily be curved at the job site. Custom I-Beam finishes are not available.

Dual roller glide carriers are attached to the mesh at 6" intervals to provide smooth rolling action. I-beam track is installed using ceiling or wall brackets.

*T045X Clear Anodized Aluminum
I-Beam Track*





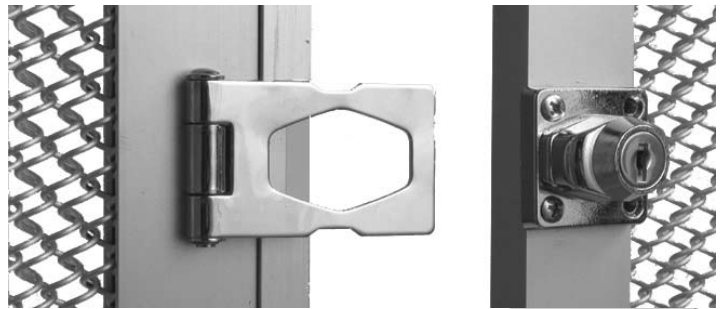
Locks & Footbolts

Locks

The 5/8" steel heavy hook bolt lock (left) is installed in an anodized aluminum extrusion and is available in both a single and double-sided keyed system. When locked, the overlapping extrusions create a secure hold from top to bottom. For lighter security, a keyed chrome locking hasp (below) is available.



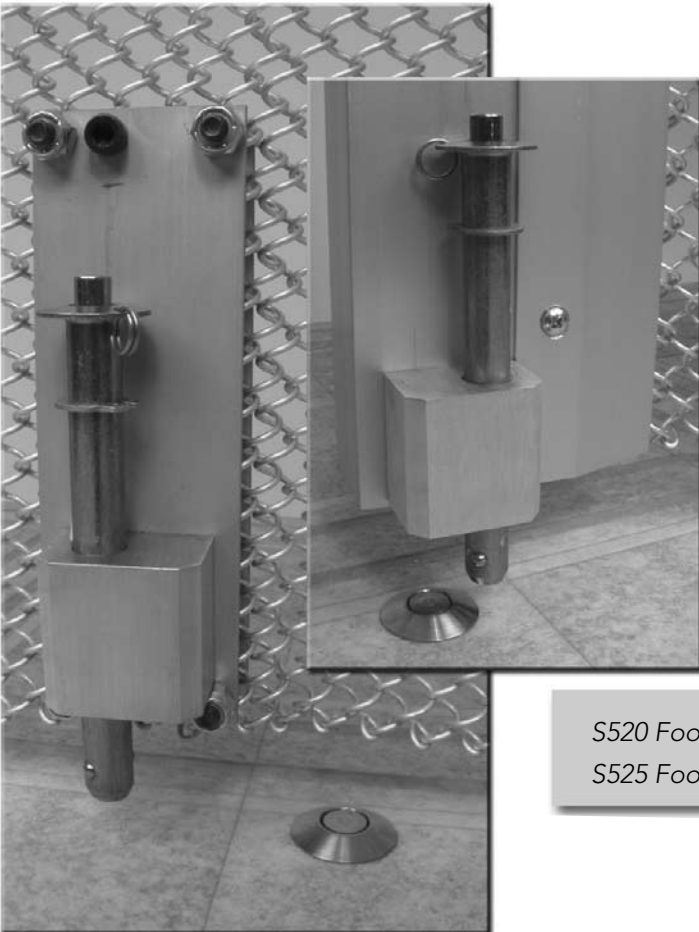
L200XS / L210XS



L220LH

Positive Locking Footbolts

Cascade Coil recommends using positive locking footbolts for openings wider than 10 feet. Additional footbolts may be added and are recommended for curves or corners. The exclusive custom designed footbolt incorporates a unique stainless steel spring loaded locking receptacle for added security and easy use. Footbolts are only accessible from the secured "inside" of the system. Because locking receptacles are spring-loaded there is a flush surface when not in use, eliminating problems with dust and debris. Footbolts are available installed on center lock channels or in a kit for installation onto the lower edge of the mesh where desired.

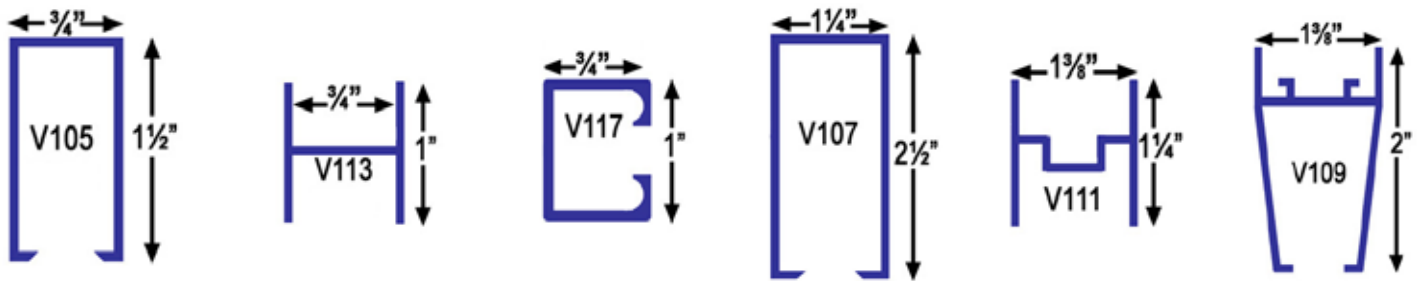


S520 Footbolt Installed on Channel
S525 Footbolt Kit

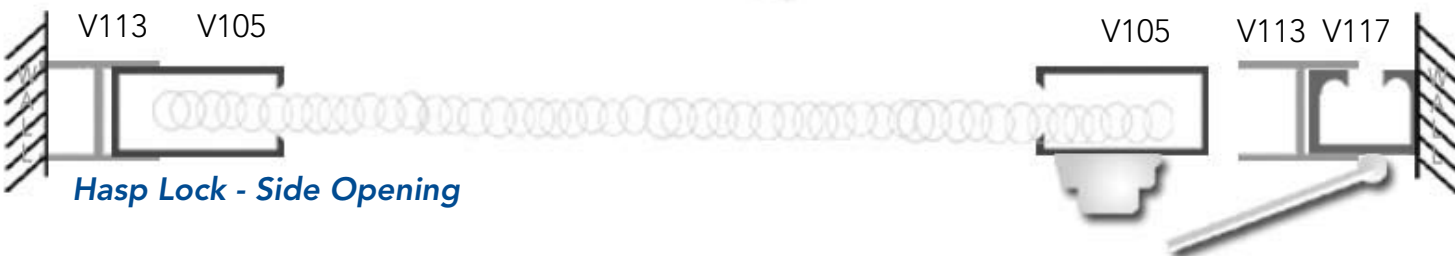
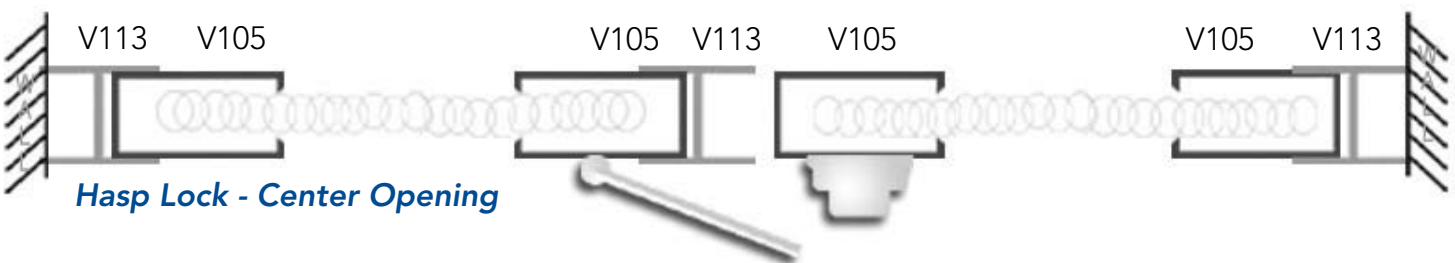
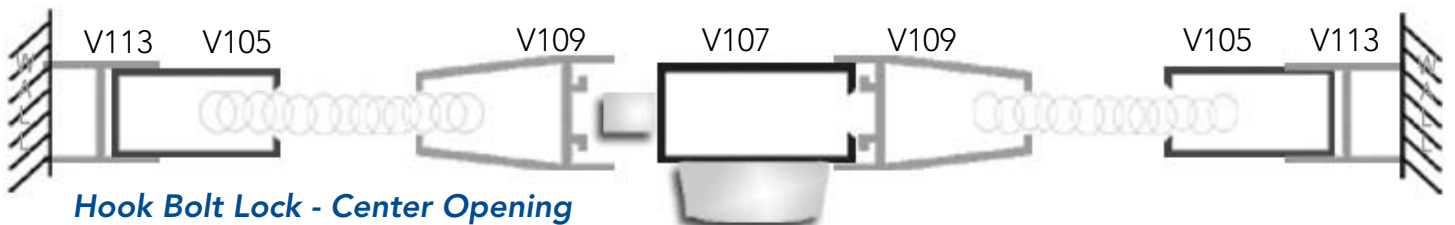


Vertical Channels

Anodized aluminum interlocking vertical channels complete the system, increasing security and adding a dynamic contemporary look. They frame and secure the material at vertical connection points such as walls and center locking positions.



Vertical channels and lock assemblies are factory installed. Wall jamb channels are provided separately. Most applications incorporate the configurations illustrated below.



Note: Bottom of each configuration is the unsecured side.
Option numbers are for the recommended clear anodized finish.



Flexible Woven Wire Security Systems

Custom manufactured flexible woven wire coil drapery security systems may be a great solution for your security needs.

ADVANTAGES:

- Visually appealing
- Allows ventilation
- Lightweight
- Easy to install
- Durable & Fireproof
- See-Thru Property

APPLICATIONS:

- Area reduction or section closures in restaurants
- Storefront closures in shopping malls
- Secure display counters
- Hazardous material storage in supply closets
- Co-located technical space
- Dividers separating public and private areas
- Attractive security deterrent behind large display windows

Cascade Coil Drapery's Complete Product Line...



For over 40 years Cascade Coil Drapery has been manufacturing a custom product specified by leading designers and architects for dividers, window, ceiling and wall treatments. Often used to create a focal point in restaurants, hotels, homes, and offices, the material has also been incorporated into other applications such as rock music tour sets and feature films, museum displays, trade show exhibits, and retail store displays.

Cascade Coil Drapery's wire mesh fabric is also used for a wide variety of industrial safety applications. It has been incorporated into the design of streetcars, and has been used by major airline manufactures to test jet engines. Phantom Mesh® is used for aviaries and animal containment in major zoos and parks around the world.

GiCor lodging projects ltd.

106, 1409 Edmonton Trail NE.
Calgary, Alberta. T2E 3K8

Toll free: (866) 664-4267
Ph. (403) 242-9948
Fax: (403) 313-9230

email: info@gicor.com
website: www.gicor.com



**Manufacturers of Architectural Woven Wire Drapery for the following applications:
Security & Safety, Window Treatments, Partitions, Fireplace Screens, Lighting Effects and more**