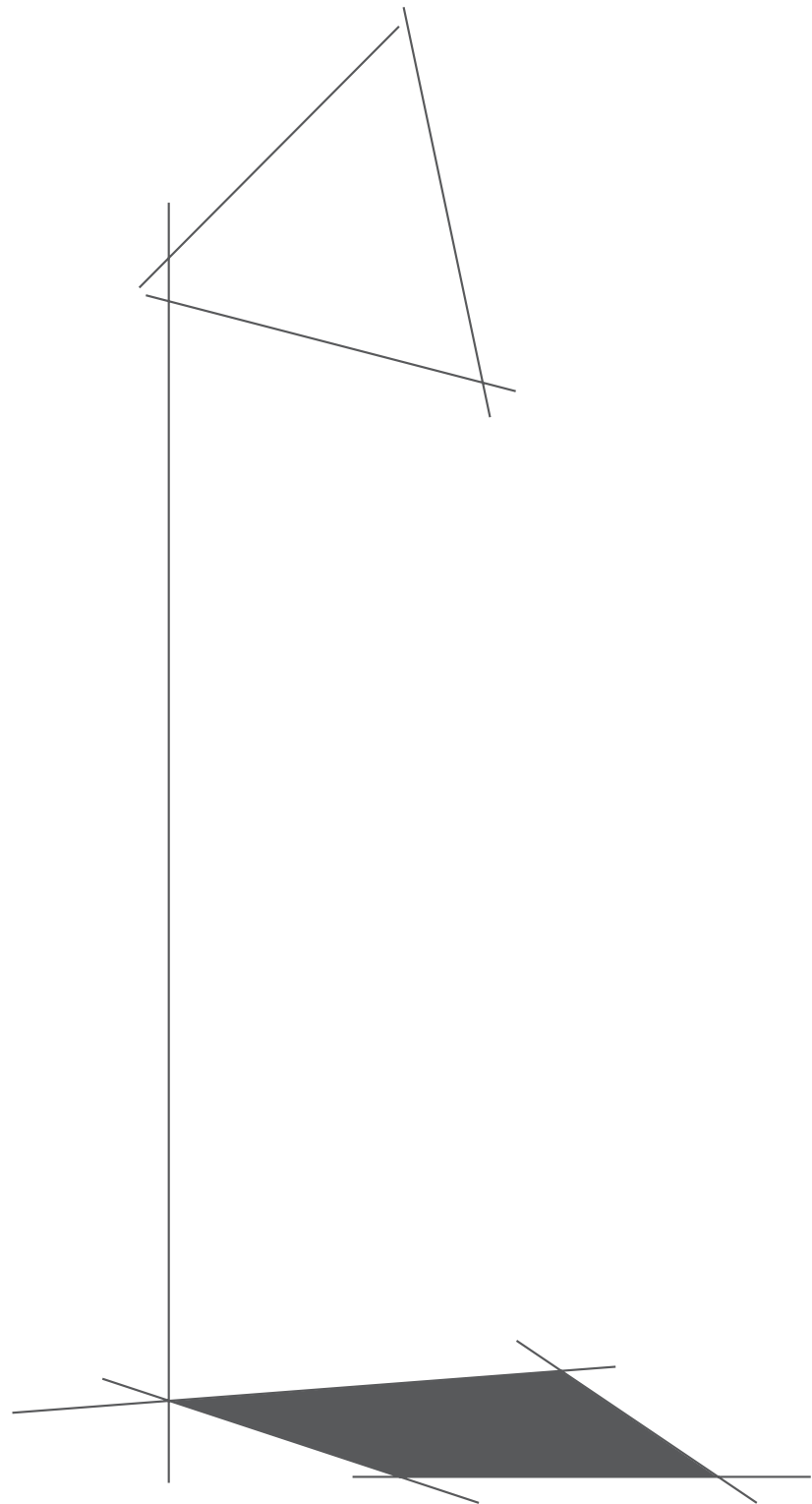




THE ART OF SHADING





The Art of Shading

by Corradi

Corradi's ALL NEW Shading Line provides a variety of sophisticated shading options that inspire and enhance any outdoor setting. From the sleek inconspicuous casing of the highly sought after Shan Awning to the outspoken nautical elegance of the Defense Shade Sail, Corradi Shading Systems are an essential presence in outdoor living and shading design.

Corradi is an Italian Company dedicated to bringing vitality and functionality to outdoor spaces. Creating a Corradi Outdoor Living Space becomes an easy reality with our American manufacturing branch, Corradi USA, based in Dallas TX. Whether you are enhancing the operational charm of the outdoor comforts of home or expanding the atmosphere of an energetic commercial establishment, Corradi has the creative solution to your **outdoor dream space**.

More than just **LIGHT and SHADOW**

| | |
|-------------------------|----|
| SHAN AWNING | 2 |
| SVET AWNING | 4 |
| EVO & EVO Semi Cassette | 6 |
| ILIOS SCREEN & DROP ARM | 8 |
| AIRE DROP SCREEN AWNING | 10 |
| HORIZON SCREEN AWNING | 12 |
| DEFENSE SHADE SAIL | 14 |
| MOTORS | 16 |
| FABRIC | 17 |



Shan Retractable Arm Cassette Awning

No compromise on performance or design.

Winner of the 2010 Red dot design award, SHAN is the state-of-the-art of all cassette awnings. When it comes to your house, you want a cassette awning that works perfectly and that shades without compromising the aesthetic line. SHAN meets all these requirements and fully integrates with the architecture.

Because of its marked shape and design, SHAN can **only be installed on the wall** and is only motorized. The D.T.S. system (Dynamic Tipping System) allows the tipping of the support when the awning is retracting, maintaining a perfect closure of the cassette. The special gasket along the whole terminal profile makes the awning watertight and ensures a silent closure. The compact box dimension is 10" in height and 7 1/4" deep. A single section is up to 23' (276") width and can reach a 13'8" (164") projection. Pitch adjustment is available up to a 40° pitch. The

micrometric regulation of inclination allows for easy and precise pitch adjustment. The Shan is also motorized with a Nice torque sensing motor with the limits preset at the factory.

Standard Frame colors available for the Shan are White Sable, Anthracite, & Corten - all finishes are matte.

Complete line of awning fabrics available, featuring our Para Tempotest line of 100% acrylic awning material.

The Shan is a patented system.

Standard Frame Color Options (all 3 are matte finish)

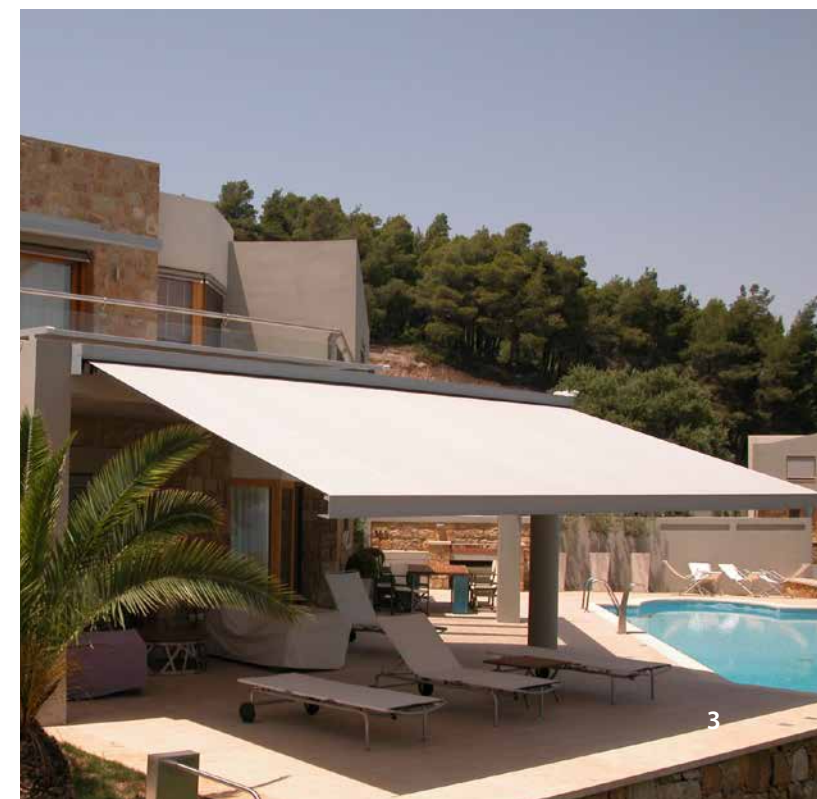


*these are printed images of the finish & should not be used for final production specifications.

*RAL custom frame colors are available at an upcharge.

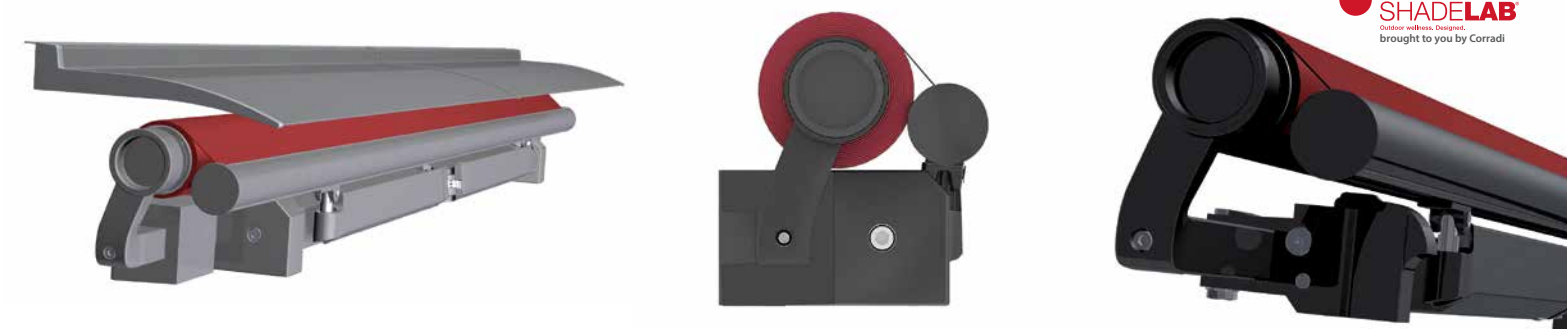


SHAN





SVET



Svet Retractable Arm Open Roll Awning

The Aesthetic Revolution

Extreme design, cutting edge performance and its marked aluminium profile make the Svet perfectly in line with contemporary urban architecture. Dare more! Think different! Be Heard!

Thanks to its new arm support in extruded aluminium, SVET can reach a 23' (276") width by 13'8" (164") projection enabling it to shade wide surfaces; that's why it is particularly suited for bars, restaurants and resorts.

SVET is matched with the patented feature arm URBAN, the essence of the most advanced technology and fine Italian design. URBAN and SVET only use Italian certified stainless steel screws and bolts, eliminating the need for a secondary component attached to a stand square bar to secure the rolltube and provides for a seamless connection and design. It also

features the innovative Dynamic Arm Torsion System, which helps to protect the traction mechanism and to prevent fabric tears.

Standard Frame colors available for the Svet are White Sable, Anthracite, & Corten - all finishes are matte.

Complete line of awning fabrics available, featuring our Para Tempotest line of 100% acrylic awning material.

The Svet is a patented system.

Standard Frame Color Options *(all 3 are matte finish)*



*these are printed images of the finish & should not be used for final production specifications.
*RAL custom frame colors are available at an upcharge.



Limited Lifetime Warranty

REGISTERED DESIGN





EVO & EVO SC Retractable Arm Awnings

Raising the bar for Awning Design Standards for both open roll and semi-cassette awnings.

Combines sophisticated design with the modern technology to offer unparalleled performance and unique features currently not found on any other system of its kind.

The EVO is an elegant open roll awning. It utilizes the EVO arm bracket of which is a combination die-cast/extrusion to obtain the highest strength and still provide the maximum ease for pitch adjustment and installation. Thanks to the strength and the design of the arm bracket, EVO is the only awning in the market that can safely go to a 13' 6" (162") projection still using a standard 40 x 40 mm square support bar.

EVO SC (pictured above) uses the same technology of the EVO and adds 3 additional components to create a Semi-Cassette. This provides complete protection to the fabric as well as leaves the components accessible for easy installation and adjustments.

When closed, EVO SC completely conceals the fabric, like a cassette awning, giving it a clean and covert design. The EVO SC is available up to the 40' (480") maximum width.

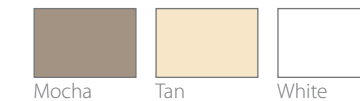
Standard Frame colors available for the EVO and EVO SC are White, Tan, and Mocha - all finishes are gloss.

Complete line of awning fabrics available, featuring our Para Tempotest line of 100% acrylic awning material.

The EVO and EVO SC have a Limited Lifetime Warranty.

Standard Frame Color Options

(all 3 are **gloss** finish)



Mocha

Tan

White

*these are printed images of the finish & should not be used for final production specifications.

*RAL custom frame colors are available at an upcharge.

Limited Lifetime Warranty

EVO & EVO SC



Residential EVO SC | Courtesy of Awnimation





Ilios Cable Guide (Ray) and Drop Arm (Wing) Design Patented Awnings

The Expression of Passion & Innovation - using a round profile that allows for both a screen or drop arm application.

Winner of the 2012 Red dot design award, ILIOS is the new ShadeLAB superstar in the drop awning sector. Clean, Elegant, technologically innovative, with excellent performance and wide installation variants, it is the expression of the ShadeLAB team passionate work!

ILIOS is available in 4 different versions to better suit private and commercial applications: with full housing or open-roll with only brackets, with steel cable guides or with tensioned arms. ShadeLAB vocation for research and testing has enabled it to engineer a unique solution in the market, particularly apt for WING and RAY versions: a terminal bar that perfectly integrates inside the box, always enabling a hermetic (completely sealed and watertight) enclosure. ILIOS can be installed on the wall and ceiling and offers a great advantage: maintenance and change of fabric/motor can be removed without uninstalling the awning. Thanks to the practical SMART-BOX system, the front cover can be removed quickly and effortlessly. There are no visible screws

which provide a clean and elegant design. The maximum size of the awning with acrylic fabric is 16'5" (197") width with 9'10" (118") height, while with screen fabric it can reach a 14'9" (177") height.

Standard Frame colors available for the Ilios are White Sable, Anthracite, & Corten - all finishes are matte.

Complete line of awning fabrics available, featuring our Para Tempotest line of 100% acrylic awning material.

The Ilios is a patented system.

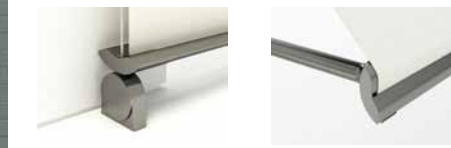
Standard Frame Color Options (all 3 are matte finish)



*these are printed images of the finish & should not be used for final production specifications.
*RAL custom frame colors are available at an upcharge.



ILIOS





Aire Drop Screen Awning

Extreme. Contemporary. Style.
Unique housing that compliments & coordinates well with the Shan awning.

Winner of the product design award 2013, AIRE is the state-of-the-art of the drop awnings: extreme style, modern design and cutting-edge technology. The product line AIRE has been developed by the ShadeLAB team to answer the growing needs of technologically innovative products, easy to integrate with contemporary building style, coming from the contract and architecture territories.

AIRE is available in 4 different variants to easily fit both domestic and commercial applications. With lateral Stainless steel cable guides or with three other aluminum lateral guide systems. In the SLIDE and ZIP versions the shading of the window is total so as to guarantee protection from sun, UV rays, rain as well as privacy. Easy and fast to install, it features an innovative auto-regulating system of the guides that enables it to work perfectly smooth. The maximum size with acrylic

fabric is 16'5" (192") width with a 9'10" (118") height, while with screen fabric a height of 14'9" (177") can be reached.

Standard Frame colors available for the Aire are White Sable, Anthracite, & Corten - all finishes are matte.

Complete line of awning fabrics available, featuring our Para Tempotest line of 100% acrylic awning material.

The Aire is a patented system.

Standard Frame Color Options (all 3 are **matte** finish)



*these are printed images of the finish & should not be used for final production specifications.
*RAL custom frame colors are available at an upcharge.



AIRE





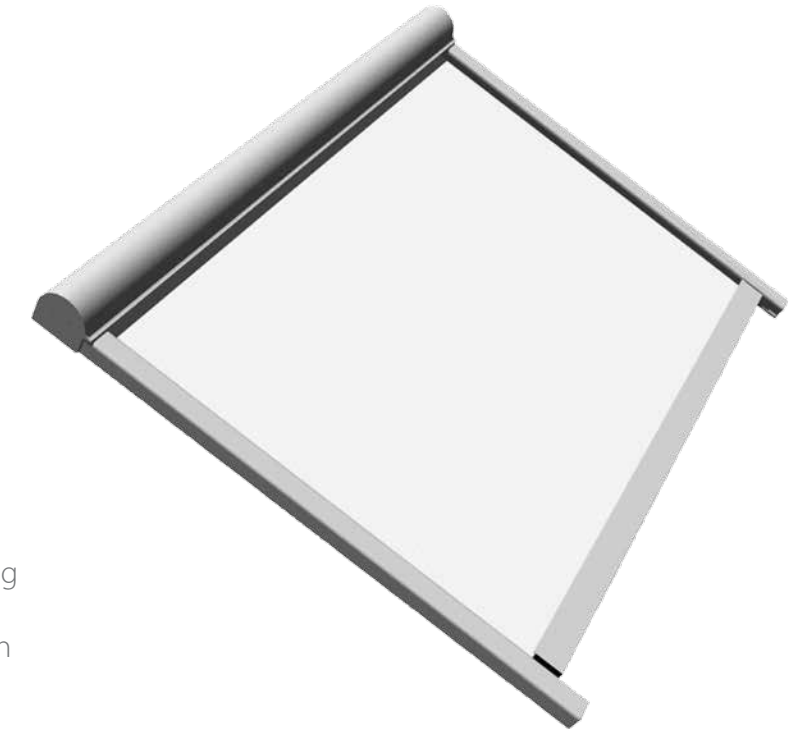
Horizon Screen Awning

Defying gravity; a screen awning with 360 degrees of possibilities.

Corradi's Horizon is a unique answer to controlling the sun's harsh U.V. rays. It is a tensioned-cord, spring-loaded design that covers large areas with no center cord, supports, etc.

The Horizon system is designed for interior and exterior skylight shading, as well as mounting to existing structures for patio areas. It can also be used for larger bottom-up applications. It is capable of up to 195 square feet of coverage per individual unit. Multiple systems can also be adjoined for even greater coverage. The Horizon can be used with solar screening materials or acrylic fabrics, and with its constant tensioning design will provide years of maintenance free sun control.

Ideal applications for the Horizon Screen Awning are skylights, bottom-ups, atriums, sunrooms, and any horizontal applications.



The standard frame color available for the Horizon is White (gloss). Complete line of screen & awning fabrics available, featuring our Para Tempotest line of 100% acrylic awning material.

The Horizon has a Limited Lifetime Warranty.

Standard Frame Color
(gloss finish)



White only

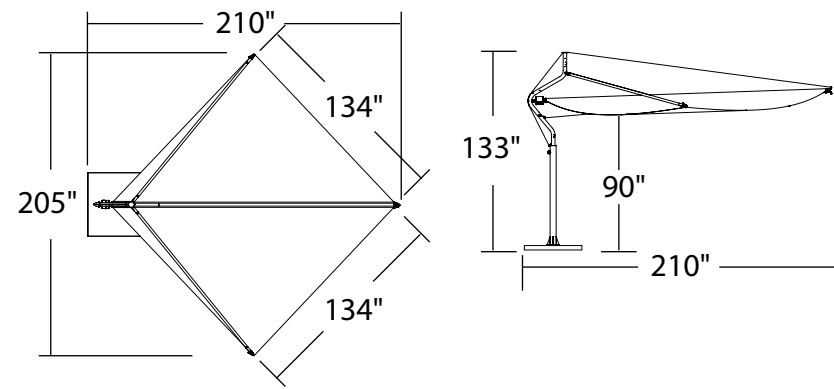
*this is a printed images of the finish & should not be used for final production specifications.

*RAL custom frame colors are available at an upcharge.



HORIZON





Defense Shade Sail

Sail through the Elements

The Defense Shade Sail stems from a deep knowledge of the nautical world. The application of technology and materials that are primarily used at sea makes the Defense completely unique and provides excellent resistance to weathering, salinity and wear.

This story is born from the sea and as the navigators of the evocative form and modern innovation; Corradi is what you want where you want it. Wherever there is a dream. Wherever there is passion. Wherever there is an outdoor space.

The originality of its form led the Defense to be considered among the top 100 most symbolic design inspirations made in Italy.

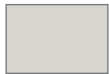
The Defense Shade Sail is in a class of its own. A Free-Standing shade made of stainless steel frame and white Dacron canvas sail

that may be rotated up to 360°. The Dacron® canvas winds up in just a few seconds by hand, or using a remote-controlled motor. In the motor-driven version, Defense is fitted with an anemometer for automatically closing the sail in the event of strong wind.

Lighting kit available.

Frame Color Aluminum only.

Fabric Dacron Canvas White only.

Frame Color
 Aluminum (only)

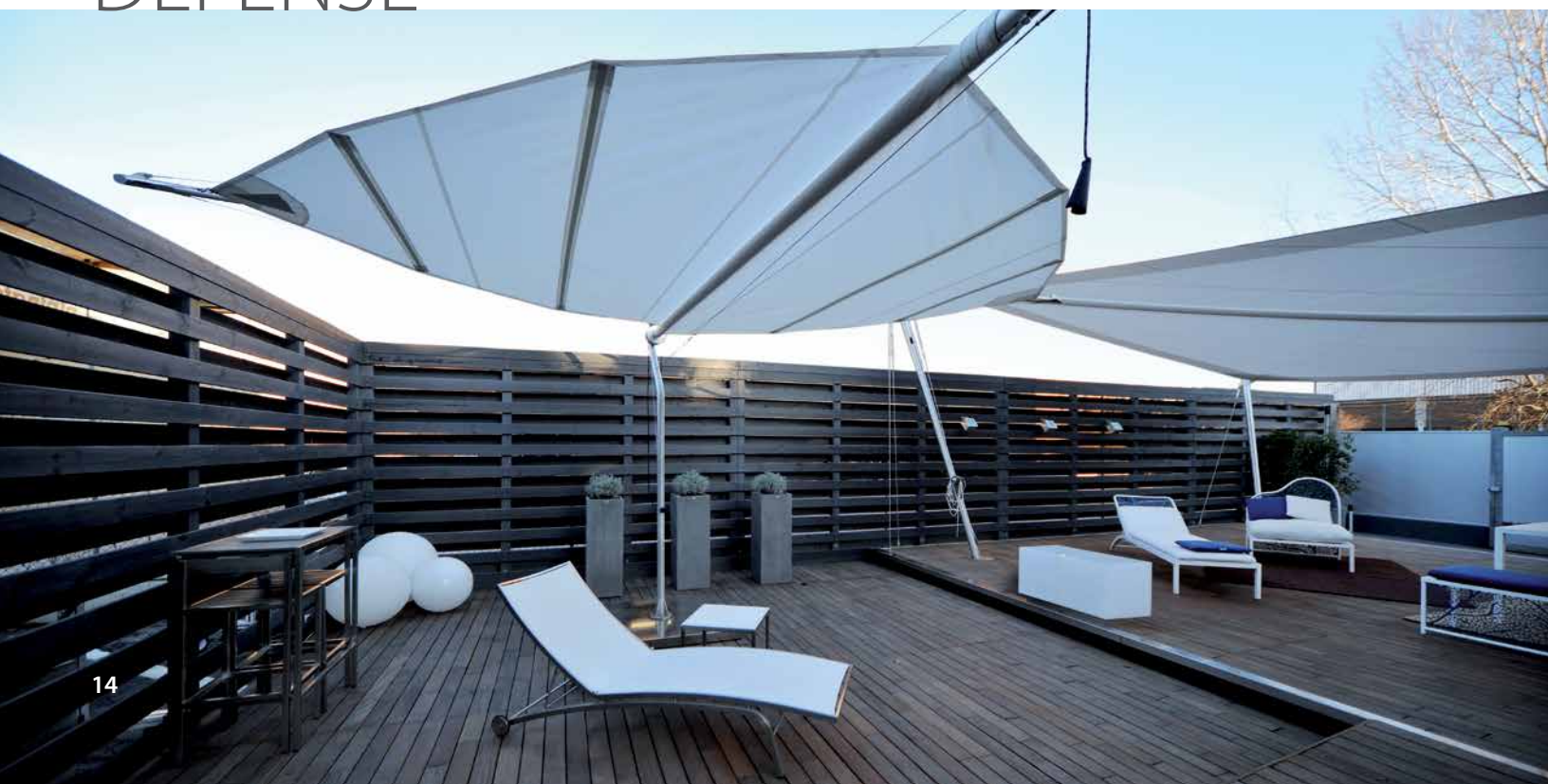
Fabric Color
 White (only)



*these are printed images of the finish & should not be used for final production specifications.



DEFENSE



Motor vs Manual

Operating Exterior Shading Systems with a motor and adding automation features such as a Sun Sensor, Wind Sensor or even integrating the Shade Motor with a home automation protocol is extremely common and has been an option for several decades. A motor is simply one of the most reliable components of a Shading System. The fact the technology has been in use for over thirty years and has only become more reliable is justification for adding a motor to your Shading System.



WHY MOTORIZED?

Simplified, easy operation. Push button operation by remote control or wireless wall switch.

Access. On a high exterior wall, window, or roof, motorization may be the only method to operate the shading system. Or with a very wide or exceptionally large projection, motorization may be the only method of effective operation.

Value. When shading systems are motorized, they are actually used more often because they are so easy to operate.

Efficiency. Rather than manually operating each shading system, motorized shading systems are easy and quick to operate, especially with two or more units.

Automation. Sensors to provide for optimum shade can be added to automatically operate the shading system when the sun becomes visible.

Lifestyle. More and more features in homes and buildings are automated.

Price. The cost of adding a motorized solution to your exterior shading system is not a significant cost in terms of the overall cost of the shading unit and high quality shading fabrics.

Reliability. The motors offered today have the latest technology that has been developing for over 30 years in Europe. The functionality and warranties offered today make this an easy purchasing decision.

Eco-friendly. More and more systems and features are becoming available with solar powered options.

Corradi USA offers both  and  brand motor options*

*depending on motor functionality and availability for each shading system.



WHY MANUAL?

Budget. While motorized shading prices continue to head downward, a manually operated shading system can still save you money. This is a no frills, least expensive method to add shading to your outdoor living environment.

No electricity available to allow for a motorized shading unit.

Eco-friendly. No electricity used is not necessarily a bad thing.



Tempotest® USA Acrylic Fabric



Corradi USA's #1 fabric choice for shading. Tempotest® USA has a stunning selection of solid color acrylic fabrics applicable for awnings, clear vinyl window borders or full exterior screen coverage. These fabrics are created for outdoor living solar protection and custom style.

Tempotest® fabrics integrate perfectly in any outdoor space creating a protection from the sun's UV rays, as well as adding a touch of color and elegance. Tempotest® is the leading acrylic awning fabric collection with the most comprehensive assortment of color options for screens and awnings, designed to fit any life style. Tempotest® also offers a Home Fabric collection that can be used to upholster outdoor furniture to compliment any outdoor living space.

The quality of the solution dyed fiber and the innovative finishing Teflon® Extreme by Parà® fabric protector, make Tempotest® fabrics water/oil repellent, resistant to mold, stains, salt and U.V. fading.

Important collaborations with companies of the highest level has led to the creation of special and exclusive products that Parà® uses to reach the highest goals.

BENEFITS:

Most comprehensive collection of stylish colors to choose from

Protection from the sun's harsh UV rays

Long term strength and durability

Fade resistant solution dyed fiber

Teflon® Extreme fabric coating protection

Easy maintenance

Certified by the highly respected authorities



Ferrari® Précontraint Solar Fabrics


Serge Ferrari

With a wide range of colors and patented précontraint technology, Ferrari fabrics have a lot to offer when it comes to solar protection and exterior shading. Ferrari® STAM®, 502, and 602 fabrics are available through Corradi USA for use on full coverage screens or as borders for clear vinyl windows for screens.

BENEFITS:

Patented Précontraint Technology

Long Term Flexibility and Strength

UV and Temperature Protection

Full Screen Coverage or Clear Vinyl Window Border

Wide range of colors



More than just
LIGHT and SHADOW

Italian Design, Innovative Thinking and Worldwide Collaboration comprise the latest
Shading Technology with components produced in Europe and America - Fabricated in the
USA

Distributed in Calgary by GiCor lodging projects Ltd.
www.gicor.com | info@gicor.com
1-866-664-4267 | (403) 242-9948 wk | (403) 313-9230 fax